

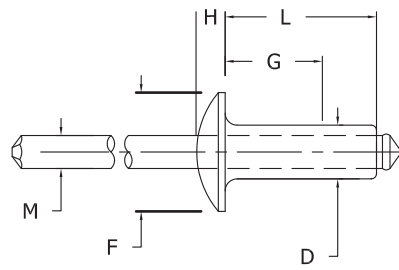
# SECTION 2: CBRC BLIND RIVETS

## BLIND RIVETS

ALUMINUM RIVET/ALUMINUM MANDREL	- DOME FLANGE	2-1
	- LARGE FLANGE	2-2
	- COUNTERSUNK FLANGE	2-3
ALUMINUM RIVET/STEEL MANDREL	- DOME FLANGE	2-4
	- LARGE FLANGE	2-5
	- COUNTERSUNK FLANGE	2-6
STEEL RIVET/STEEL MANDREL	- DOME FLANGE	2-7
	- LARGE FLANGE	2-8
	- COUNTERSUNK FLANGE	2-9
STAINLESS STEEL RIVET/STEEL MANDREL	- DOME FLANGE	2-10
	- LARGE FLANGE	2-11
STAINLESS STEEL RIVET/STAINLESS STEEL MANDREL	- DOME FLANGE	2-12
	- LARGE FLANGE	2-13
<b>CLOSED END RIVETS</b>		2-14
ALL ALUMINUM, ALUMINUM/ STEEL, ALL STAINLESS STEEL		
<b>R MATE RIVETS</b>		2-15
<b>MULTIPLE GRIP RIVETS</b>		
ALUMINUM RIVET/STEEL MANDREL		2-16
STEEL RIVET/STEEL MANDREL		2-17
STAINLESS STEEL RIVET/STAINLESS STEEL MANDREL		2-17
<b>R-BULB</b>		
ALUMINUM RIVET/ALUMINUM MANDREL		2-18
<b>PEEL</b>		
ALUMINUM / STEEL MANDREL		2-19
<b>R-BOLT</b>		2-20
ALL STEEL, ALL ALUMINUM, ALL STAINLESS STEEL		
<b>MEGALOCK</b>		2-21
ALL STEEL, ALL ALUMINUM, ALL STAINLESS STEEL		
<b>A-LOCK STEEL</b>		2-22
<b>R-LOCK STEEL</b>		
	-DOME FLANGE	2-23
	-COUNTERSUNK FLANGE	2-24
	-LARGE FLANGE	2-25
<b>SUPER R-LOCK</b>		2-26
<b>R-LOCK ALUMINUM</b>		
	-DOME FLANGE	
	-COUNTERSUNK FLANGE	2-27
<b>R-LOCK STAINLESS STEEL</b>		
	-DOME FLANGE	2-28
	-COUNTERSUNK FLANGE	2-28
	-LARGE FLANGE	2-28

# DOME FLANGE

# BLIND RIVETS

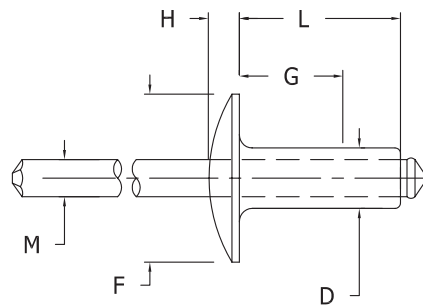


AFTER INSTALLATION



ALUMINIUM RIVET/ALUMINIUM MANDREL

Part Number	Hole Size And Drill Number	Mandrel Ø (M)	Flange Ø (F)	Max. Head Height (H)	Max. Barrel Length (L)	Rivet Size (D)	Grip Range (G)	Typical Strength	
								Shear	Tensile
SAA 32	.096-.100	.057	.188	.032	.250	3/32	.020 - .125	85 lbs	135 lbs
34	#41				.375		.126 - .250		
SAA 41	.129-.133 #30	.076	.250	.045	.212	1/8	.020 - .063	155 lbs	235 lbs
42					.275		.063 - .125		
43					.337		.126 - .187		
44					.400		.188 - .250		
45					.462		.251 - .312		
46					.525		.313 - .375		
48					.650		.376 - .500		
410	.775	.501 - .625							
SAA 52	.160-.164 #20	.095	.312	.055	.300	5/32	.063 - .125	225 lbs	350 lbs
53					.362		.126 - .187		
54					.425		.188 - .250		
56					.550		.251 - .375		
58					.675		.376 - .500		
510					.800		.501 - .625		
SAA 62	.192-.196 #11	.114	.375	.060	.325	3/16	.063 - .125	315 lbs	500 lbs
63					.387		.126 - .187		
64					.450		.188 - .250		
66					.575		.251 - .375		
68					.700		.376 - .500		
610					.825		.501 - .625		
612					.950		.626 - .750		
614					1.075		.751 - .875		
616	1.200	.876 - 1.000							
SAA 84	.257-.261 F	.151	.500	.080	.500	1/4	.063 - .250	600 lbs	750 lbs
86					.625		.251 - .375		
88					.750		.376 - .500		
810					.875		.501 - .625		
812					1.000		.626 - .750		
814					1.125		.751 - .875		
816					1.250		.876 - 1.000		



AFTER INSTALLATION

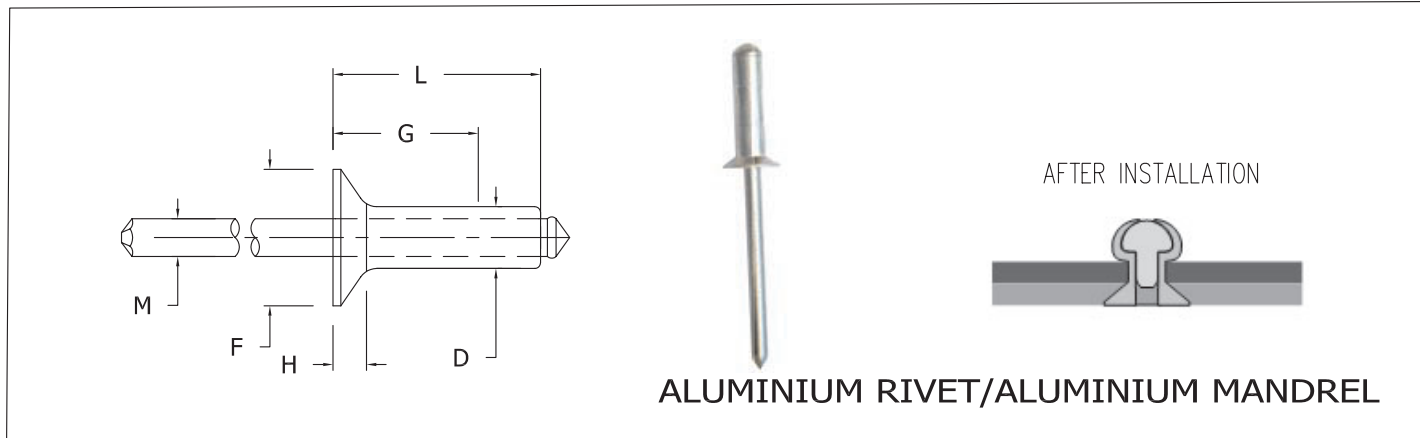


ALUMINIUM RIVET/ALUMINIUM MANDREL

Part Number	Hole Size And Drill Number	Mandrel $\emptyset$ (M)	Flange $\emptyset$ (F)	Max. Head Height (H)	Max. Barrel Length (L)	Rivet Size (D)	Grip Range (G)	Typical Strength	
								Shear	Tensile
SAB 42	.129-.133 #30	.076	.375	.065	.275	1/8	.020 - .125	155 lbs	235 lbs
43					.337		.126 - .250		
44					.400		.188 - .250		
46					.525		.251 - .375		
SAB 54	.160-.164 #20	.095	.468	.075	.425	5/32	.063 - .250	225 lbs	350 lbs
56					.550		.251 - .375		
SAB 64	.192-.196 #11	.114	.625	.092	.450	3/16	.020 - .250	315 lbs	500 lbs
66					.575		.251 - .375		
68					.700		.376 - .500		
610					.825		.501 - .625		
612					.950		.626 - .750		
616					1.200		.876 - 1.000		

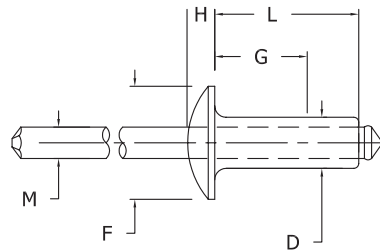
# COUNTERSUNK FLANGE

# BLIND RIVETS



Part Number	Hole Size And Drill Number	Mandrel Ø (M)	Flange Ø (F)	Max. Head Height (H)	Max. Barrel Length (L)	Rivet Size (D)	Grip Range (G)	Typical Strenght	
								Shear	Tensile
SAC 42	.129-.133 #30	.076	.220	.031	.275	1/8	.063 - .125	155 lbs	235 lbs
43					.337		.126 - .187		
44					.400		.188 - .250		
46					.525		.251 - .375		
SAC 52	.160-.164 #20	.095	.281	.040	.300	5/32	.063 - .187	225 lbs	350 lbs
54					.425		.188 - .250		
56					.550		.251 - .375		
58					.675		.376 - .500		
SAC 63	.192-.196 #11	.114	.348	.050	.387	3/16	.063 - .187	315 lbs	500 lbs
64					.450		.188 - .250		
66					.575		.251 - .375		
68					.700		.376 - .500		
610					.825		.501 - .625		
612					.950		.626 - .750		
614	1.075	.751 - .875							

Product specification are in effect at the time of publishing



AFTER INSTALLATION



ALUMINUM RIVET/STEEL MANDREL

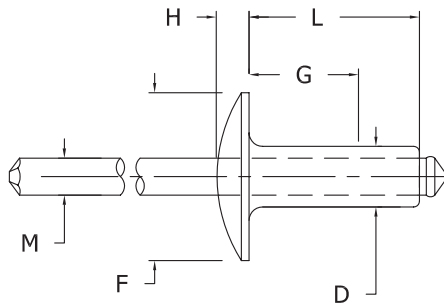
Part Number	Hole Size And Drill Number	Mandrel Ø (M)	Flange Ø (F)	Max. Head Height (H)	Max. Barrel Length (L)	Rivet Size (D)	Grip Range (G)	Typical Strength		
								Shear	Tensile	
SFA 32	.096-.100	.057	.188	.032	.250	3/32	.020 - .125	125 lbs	175 lbs	
34	#41									.126 - .250
SFA 41	.129-.133 #30	.076	.250	.045	.400	1/8	.188 - .250	210 lbs	325 lbs	
42										.020 - .063
43										.063 - .125
44										.126 - .187
45										.251 - .312
46										.313 - .375
48										.376 - .500
410										.501 - .625
SFA 52	.160-.164 #20	.095	.312	.055	.300	5/32	.063 - .125	340 lbs	490 lbs	
53										.126 - .187
54										.188 - .250
56										.251 - .375
58										.376 - .500
510										.501 - .625
SFA 62	.192-.196 #11	.114	.375	.060	.325	3/16	.063 - .125	445 lbs	720 lbs	
63										.126 - .187
64										.188 - .250
66										.251 - .375
68										.376 - .500
610										.501 - .625
612										.626 - .750
614										.751 - .875
616	.876 - 1.000									
SFA 84	.257-.261 F	.151	.500	.080	.500	1/4	.063 - .250	890 lbs	1200 lbs	
86										.251 - .375
88										.376 - .500
810										.501 - .625
812										.626 - .750
814										.751 - .875
816										.876 - 1.000

Product specification are in effect at the time of publishing

# LARGE FLANGE

# BLIND RIVETS

# SECTION 2



AFTER INSTALLATION

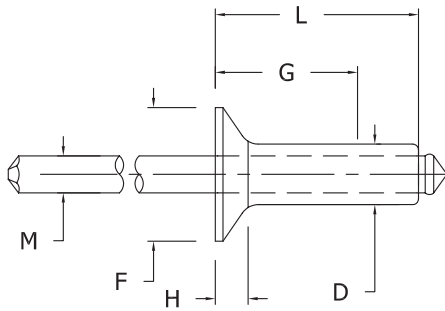


ALUMINUM RIVET/ STEEL MANDREL

Part Number	Hole Size And Drill Number	Mandrel Ø (M)	Flange Ø (F)	Max. Head Height (H)	Max. Barrel Length (L)	Rivet Size (D)	Grip Range (G)	Typical Strength	
								Shear	Tensile
SFB 42	.129-.133 #30	.076	.375	.065	.275	1/8	.020 - .125	210 lbs	325 lbs
43					.337		.126 - .250		
44					.400		.188 - .250		
46					.525		.251 - .375		
SFB 54	.160-.164 #20	.095	.468	.075	.425	5/32	.063 - .250	340 lbs	490 lbs
56					.550		.251 - .375		
SFB 64	.192-.196 #11	.114	.625	.092	.450	3/16	.020 - .250	445 lbs	720 lbs
66					.575		.251 - .375		
68					.700		.376 - .500		
610					.825		.501 - .625		
612					.950		.626 - .750		
616					1.200		.876 - 1.000		

## COUNTERSUNK FLANGE

## BLIND RIVETS



AFTER INSTALLATION



ALUMINUM RIVET/STEEL MANDREL

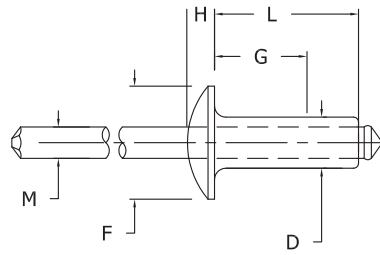
Part Number	Hole Size And Drill Number	Mandrel Ø (M)	Flange Ø (F)	Max. Head Height (H)	Max. Barrel Length (L)	Rivet Size (D)	Grip Range (G)	Typical Strength	
								Shear	Tensile
SFC 42	.129-.133 #30	.076	.220	.031	.275	1/8	.063 - .125	210 lbs	325 lbs
43					.337		.126 - .187		
44					.400		.188 - .250		
46					.525		.251 - .375		
SFC 52	.160-.164 #20	.095	.281	.040	.300	5/32	.063 - .187	340 lbs	490 lbs
54					.425		.188 - .250		
56					.550		.251 - .375		
58					.675		.376 - .500		
SFC 63	.192-.196 #11	.114	.348	.050	.387	3/16	.063 - .187	445 lbs	720 lbs
64					.450		.188 - .250		
66					.575		.251 - .375		
68					.700		.376 - .500		
610					.825		.501 - .625		
612					.950		.626 - .750		
614					1.075		.751 - .875		

Product specification are in effect at the time of publishing

# DOME FLANGE

# BLIND RIVETS

# SECTION 2



AFTER INSTALLATION



STEEL RIVET/STEEL MANDREL

Part Number	Hole Size And Drill Number	Mandrel Ø (M)	Flange Ø (F)	Max. Head Height (H)	Max. Barrel Length (L)	Rivet Size (D)	Grip Range (G)	Typical Strength	
								Shear	Tensile
SSA 32	.096-.100	.057	.188	.032	.250	3/32	.020 - .125	150 lbs	205 lbs
34	#41				.375		.126 - .250		
SSA 41	.129-.133 #30	.076	.250	.045	.212	1/8	.020 - .063	295 lbs	425 lbs
42					.275		.063 - .125		
43					.337		.126 - .187		
44					.400		.188 - .250		
45					.462		.251 - .312		
46					.525		.313 - .375		
48					.650		.376 - .500		
410					.775		.501 - .625		
SSA 52	.160-.164 #20	.095	.312	.055	.300	5/32	.063 - .125	410 lbs	570 lbs
53					.362		.126 - .187		
54					.425		.188 - .250		
56					.550		.251 - .375		
58					.675		.376 - .500		
510					.800		.501 - .625		
SSA 62	.192-.196 #11	.114	.375	.060	.325	3/16	.063 - .125	590 lbs	815 lbs
63					.387		.126 - .187		
64					.450		.188 - .250		
66					.575		.251 - .375		
68					.700		.376 - .500		
610					.825		.501 - .625		
612					.950		.626 - .750		
614					1.075		.751 - .875		
616					1.200		.876 - 1.000		
SSA 84	.257-.261 F	.151	.500	.080	.500	1/4	.063 - .250	1245 lbs	1505 lbs
86					.625		.251 - .375		
88					.750		.376 - .500		
810					.875		.501 - .625		
812					1.000		.626 - .750		
814					1.125		.751 - .875		
816					1.250		.876 - 1.000		

Product specification are in effect at the time of publishing

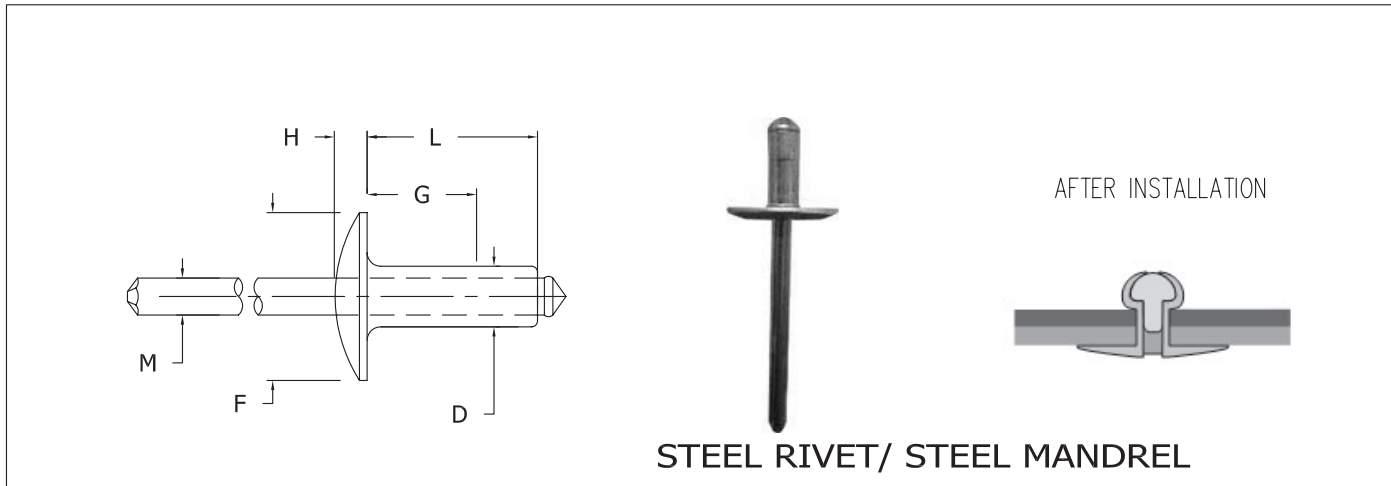
**CBRC 1.800.258.2579**



# LARGE FLANGE

# BLIND RIVETS

# SECTION 2



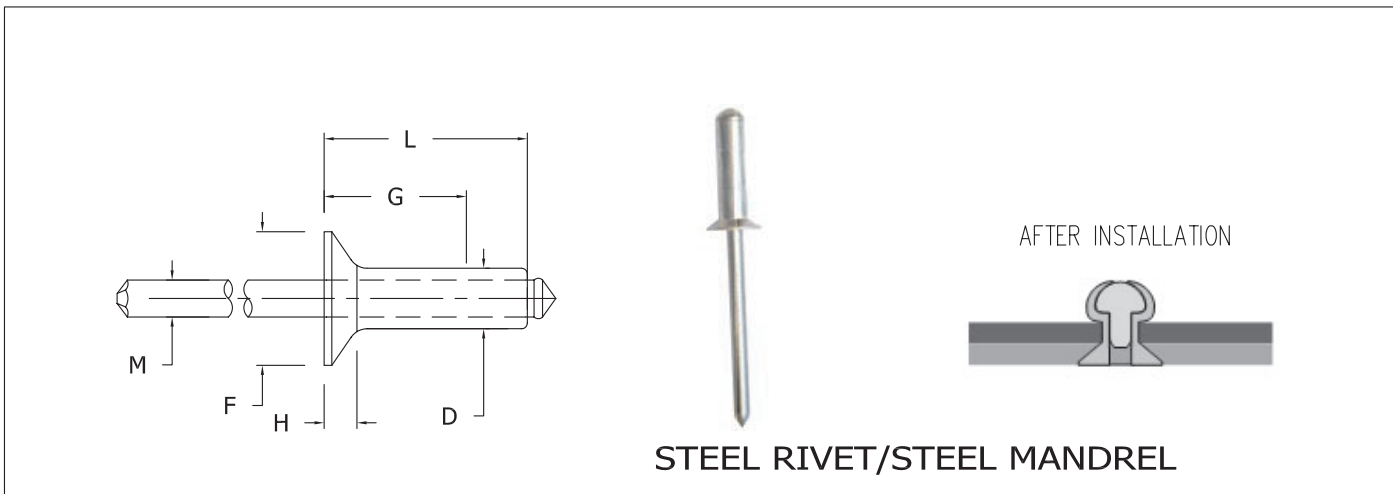
Part Number	Hole Size And Drill Number	Mandrel Ø (M)	Flange Ø (F)	Max. Head Height (H)	Max. Barrel Length (L)	Rivet Size (D)	Grip Range (G)	Typical Strength	
								Shear	Tensile
SSB 42	.129-.133 #30	.076	.375	.065	.275	1/8	.020 - .125	295 lbs	425 lbs
43					.337		.126 - .250		
44					.400		.188 - .250		
46					.525		.251 - .375		
SSB 54	.160-.164 #20	.095	.468	.075	.425	5/32	.063 - .250	410 lbs	570 lbs
56					.550		.251 - .375		
SSB 64	.192-.196 #11	.114	.625	.092	.450	3/16	.020 - .250	590 lbs	815 lbs
66					.575		.251 - .375		
68					.700		.376 - .500		
610					.825		.501 - .625		
612					.950		.626 - .750		
616					1.200		.876 - 1.000		

Product specification are in effect at the time of publishing

# COUNTERSUNK FLANGE

# BLIND RIVETS

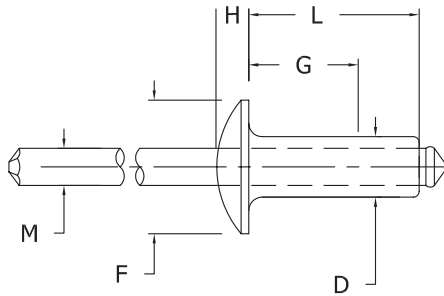
# SECTION 2



Part Number	Hole Size And Drill Number	Mandrel Ø (M)	Flange Ø (F)	Max. Head Height (H)	Max. Barrel Length (L)	Rivet Size (D)	Grip Range (G)	Typical Strength	
								Shear	Tensile
SSC 42	.129-.133 #30	.076	.220	.031	.275	1/8	.063 - .125	295 lbs	425 lbs
43					.337		.126 - .187		
44					.400		.188 - .250		
46					.525		.251 - .375		
SSC 52	.160-.164 #20	.095	.281	.040	.300	5/32	.063 - .187	410 lbs	570 lbs
54					.425		.188 - .250		
56					.550		.251 - .375		
58					.675		.376 - .500		
SSC 63	.192-.196 #11	.114	.348	.050	.387	3/16	.063 - .187	590 lbs	815 lbs
64					.450		.188 - .250		
66					.575		.251 - .375		
68					.700		.376 - .500		
610					.825		.501 - .625		
612					.950		.626 - .750		
614					1.075		.751 - .875		

Product specification are in effect at the time of publishing

# DOME FLANGE



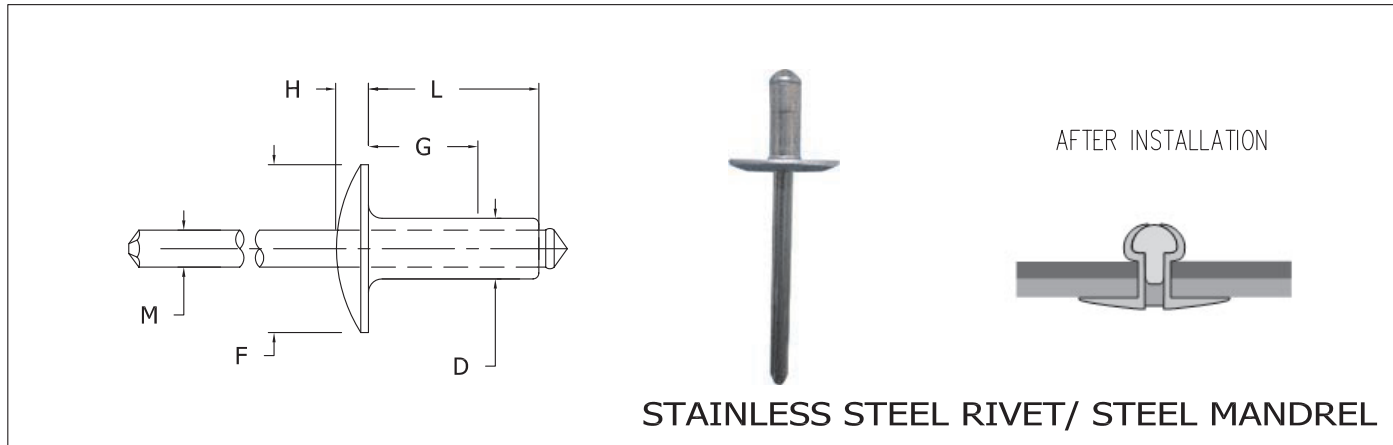
AFTER INSTALLATION



STAINLESS STEEL RIVET/STEEL MANDREL

Part Number	Hole Size And Drill Number	Mandrel Ø (M)	Flange Ø (F)	Max. Head Height (H)	Max. Barrel Length (L)	Rivet Size (D)	Grip Range (G)	Typical Strenght	
								Shear	Tensile
SCA 41	.129-.133 #30	.076	.250	.045	.212	1/8	.020 - .063	550 lbs	700 lbs
42					.275		.063 - .125		
43					.337		.126 - .187		
44					.400		.188 - .250		
45					.462		.251 - .312		
46					.525		.313 - .375		
48					.650		.376 - .500		
410					.775		.501 - .625		
SCA 52					.160-.164 #20		.095		
53	.362	.126 - .187							
54	.425	.188 - .250							
56	.550	.251 - .375							
58	.675	.376 - .500							
510	.800	.501 - .625							
SCA 62	.192-.196 #11	.114	.375	.060	.325	3/16	.063 - .125	1000 lbs	1375 lbs
63					.387		.126 - .187		
64					.450		.188 - .250		
66					.575		.251 - .375		
68					.700		.376 - .500		
610					.825		.501 - .625		

Product specification are in effect at the time of publishing



STAINLESS STEEL RIVET/ STEEL MANDREL

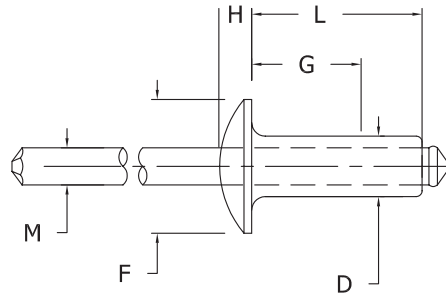
Part Number	Hole Size And Drill Number	Mandrel Ø (M)	Flange Ø (F)	Max. Head Height (H)	Max. Barrel Length (L)	Rivet Size (D)	Grip Range (G)	Typical Strength	
								Shear	Tensile
SCB 42	.129-.133 #30	.076	.375	.065	.275	1/8	.020 - .125	550 lbs	700 lbs
44					.400		.126 - .250		
SCB 64	.192-.196 #11	.114	.625	.092	.450	3/16	.126 - .250	1000 lbs	1375 lbs
66					.575		.251 - .375		
68					.700		.376 - .500		
610					.825		.500 - .625		
612					.950		.626 - .750		

Product specification are in effect at the time of publishing

# DOME FLANGE

# BLIND RIVETS

# SECTION 2



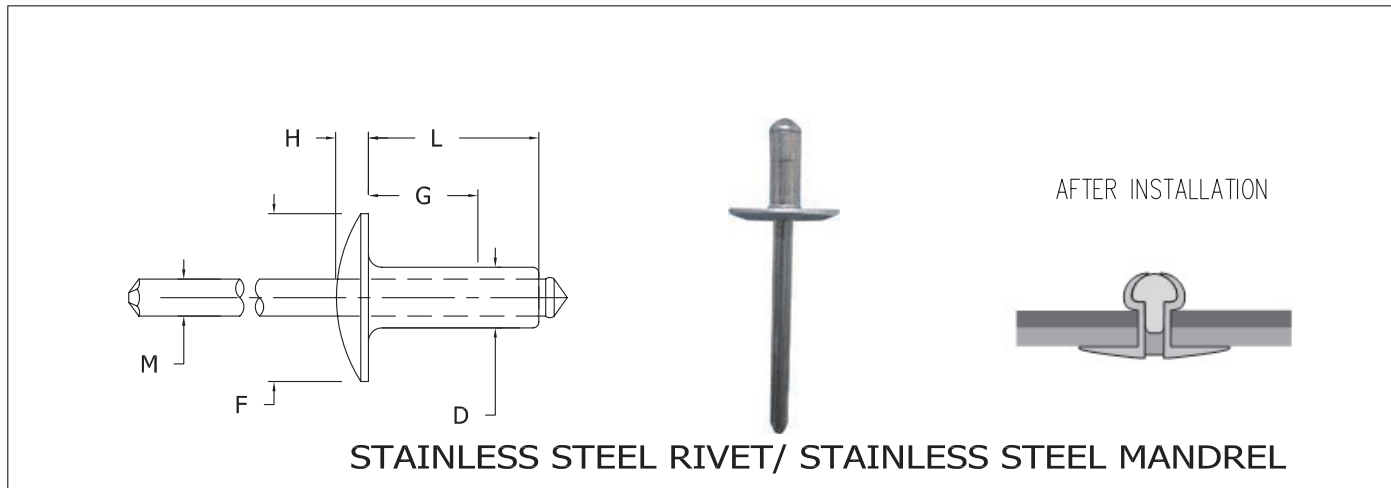
AFTER INSTALLATION



STAINLESS STEEL RIVET/ STAINLESS STEEL MANDREL

Part Number	Hole Size And Drill Number	Mandrel Ø (M)	Flange Ø (F)	Max. Head Height (H)	Max. Barrel Length (L)	Rivet Size (D)	Grip Range (G)	Typical Strength	
								Shear	Tensile
SCCA 41	.129-.133 #30	.076	.250	.045		1/8		550 lbs	700 lbs
42									
43									
44									
45									
46									
48									
410									
SCCA 52	.160-.164 #20	.095	.312	.055		5/32		900 lbs	1100 lbs
53									
54									
56									
58									
510									
SCCA 62	.192-.196 #11	.114	.375	.060		3/16		1000 lbs	1375 lbs
63									
64									
66									
68									
610									

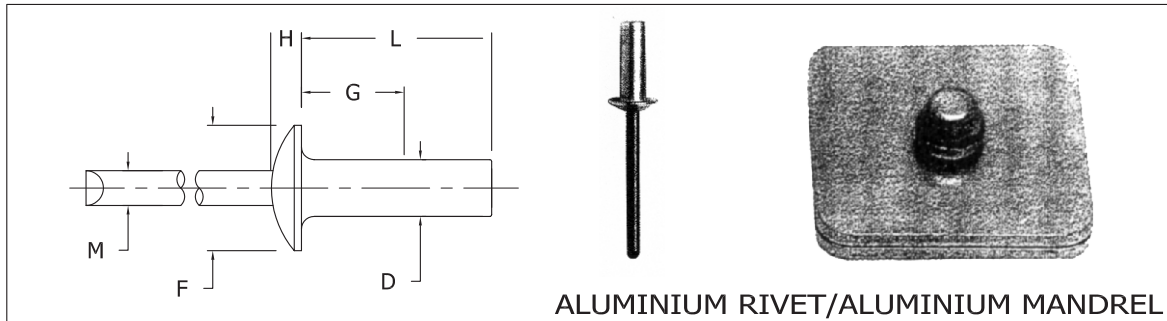
Product specification are in effect at the time of publishing



Part Number	Hole Size And Drill Number	Mandrel Ø (M)	Flange Ø (F)	Max. Head Height (H)	Max. Barrel Length (L)	Rivet Size (D)	Grip Range (G)	Typical Strength	
								Shear	Tensile
SCCB 42	.129-.133 #30	.076	.375	.065	.275	1/8	.020 - .125	550 lbs	700 lbs
44					.400		.126 - .250		
SCCB 64	.192-.196 #11	.114	.625	.092	.450	3/16	.126 - .250	1000 lbs	1375 lbs
66					.575		.251 - .375		
68					.700		.376 - .500		
610					.825		.500 - .625		
612					.950		.626 - .750		

# DOME FLANGE

# CLOSED END RIVETS



ALUMINIUM RIVET/ALUMINIUM MANDREL

Part Number	Hole Size And Drill Number	Mandrel Ø (M)	Flange Ø (F)	Max. Head Height (H)	Max. Barrel Length (L)	Rivet Size (D)	Grip Range (G)	Typical Strength	
								Shear	Tensile
SAA 42H	.129-.133 #30	.073	.238	.050	.325	1/8	.020 - .125	100 lbs	110 lbs
43H									
44H									
46H									
SAA 54H	.160-.164 #20	.091	.312	.065	.465	5/32	.020 - .250	130 lbs	160 lbs
SAA 62H	.192-.196 #11	.109	.375	.080	.355	3/16	.020 - .125	210 lbs	250 lbs
64H									
66H									
68H									

ALUMINIUM RIVET/STEEL MANDREL

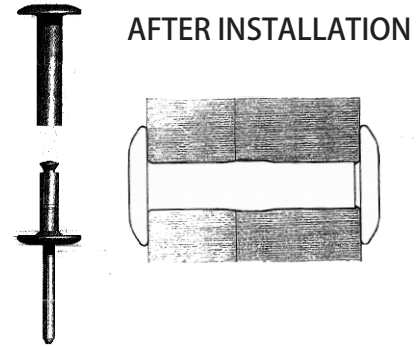
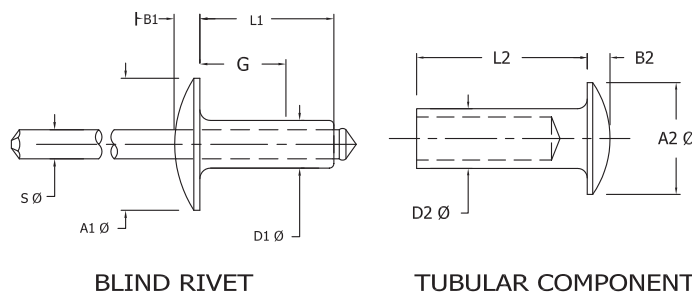
Part Number	Hole Size And Drill Number	Mandrel Ø (M)	Flange Ø (F)	Max. Head Height (H)	Max. Barrel Length (L)	Rivet Size (D)	Grip Range (G)	Typical Strength	
								Shear	Tensile
SFA 42H	.129-.133 #30	.073	.238	.050	.325	1/8	.020 - .125	240 lbs	280 lbs
43H									
44H									
46H									
SFA 54H	.160-.164 #20	.091	.312	.065	.465	5/32	.020 - .250	350 lbs	480 lbs
SFA 62H	.192-.196 #11	.109	.375	.080	.355	3/16	.020 - .125	500 lbs	960 lbs
64H									
66H									
68H									
SFA 84H	.257-.261 #20	.142	.500	.098	.570	1/4	.126 - .250	900 lbs	1100 lbs
86H									

STAINLESS RIVET/STAINLESS MANDREL

Part Number	Hole Size And Drill Number	Mandrel Ø (M)	Flange Ø (F)	Max. Head Height (H)	Max. Barrel Length (L)	Rivet Size (D)	Grip Range (G)	Typical Strength	
								Shear	Tensile
SCCA 42H	.129-.133 #30	.073	.238	.050	.345	1/8	.020 - .125	450 lbs	560 lbs
43H									
44H									
SCCA 62H	.192-.196 #11	.109	.375	.080	.380	3/16	.020 - .125	1000 lbs	1210 lbs
64H									
66H									

Product specification are in effect at the time of publishing

# R MATE RIVETS



Nominal Rivet Ø	Hole Size And Drill Number	Blind Rivet				Tubular Rivet		
		Mandrel Ø (S)	Rivet Ø (D1)	Head Ø (A1)	Head Thickness (B1)	Rivet Ø (D2)	Head Ø (A2)	Head Thickness (B2)
3/16 (4.8 mm)	.250 (6.4)	.076 (1.9)	.125 (3.2)	.375 (9.5)	.059 (1.5)	.188 (4.8)	.375 (9.5)	.057 (1.4)
1/4 (6.4 mm)	.312 (7.9)	.114 (2.9)	.187 (4.8)	.625 (15.9)	.095 (2.4)	.250 (6.4)	.625 (15.9)	.095 (2.4)

Nominal Rivet Ø	Rivet Grip Range (G)	Max. Rivet Length (L1)	Max. Comp. Length (L2)	Aluminium Blind Rivet Aluminium Tubular Component	Steel Blind Rivet Steel Tubular Component	Aluminium/Steel Blind Rivet Aluminium Tubular Comp.
3/16 (4.8 mm)	5/8 to 11/16	.525	.585	A-6A-12	S-6S-12	AS-6A-12
	11/16 to 7/8	.525	.647	A-6A-14	S-6S-14	AS-6A-14
	7/8 to 1-1/16	.525	.825	A-6A-17	S-6S-17	AS-6A-17
	1-1/16 to 1-1/4	.525	1.012	A-6A-20	S-6S-20	AS-6A-20
	1-1/4 to 1-7/16	.525	1.200	A-6A-23	S-6S-23	AS-6A-23
	1-7/16 to 1-5/8	.525	1.387	A-6A-26	S-6S-26	AS-6A-26
	1-5/8 to 1-13/16	.525	1.575	A-6A-29	S-6S-29	AS-6A-29
	1-13/16 to 2	.525	1.762	A-6A-32	S-6S-32	AS-6A-32

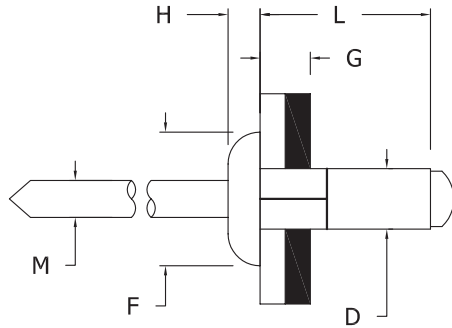
Typical Tensile Values		Not Available				
1/4 (6.4 mm)	5/8 to 3/4	.454	.580	A-8A-12	S-8S-12	AS-8A-12
	3/4 to 7/8	.608	.695	A-8A-14	S-8S-14	AS-8A-14
	7/8 to 1-1/8	.608	.820	A-8A-18	S-8S-18	AS-8A-18
	1-1/8 to 1-3/8	.608	1.070	A-8A-22	S-8S-22	AS-8A-22
	1-3/8 to 1-5/8	.608	1.320	A-8A-26	S-8S-26	AS-8A-26
	1-5/8 to 1-7/8	.608	1.570	A-8A-30	S-8S-30	AS-8A-30
	1-7/8 to 2-1/8	.608	1.820	A-8A-34	S-8S-34	AS-8A-34
	2-1/8 to 2-3/8	.608	2.070	A-8A-38	S-8S-38	AS-8A-38
	2-3/8 to 2-5/8	.608	2.320	A-8A-42	S-8S-42	AS-8A-42
	2-5/8 to 2-7/8	.608	2.570	A-8A-46	S-8S-46	AS-8A-46
	2-7/8 to 3-1/8	.608	2.820	A-8A-50	S-8S-50	AS-8A-50
Typical Tensile Values				250 lbs	350 lbs	450 lbs

Product specification are in effect at the time of publishing



# MULTIPLE GRIP RIVETS

## MULTIPLE GRIP RIVETS



AFTER INSTALLATION



RIVET MATERIAL : ALUMINIUM 5052

MANDREL MATERIAL : STEEL

Head Type	D	DRILL (M)	L	PART #	GRIP RANGE	GRIP RANGE	F	H	SHEAR	TENSILE
	mm inch	mm inch	mm inch		mm	inch	mm inch	mm inch		
DOME	3.2 1/8	3.3 #30	8.0 11.1	SFA43MG	0.8-4.8	.031-.187	6.40 .252	0.95 .037	75 165	104 230
				SFA45MG	4.0-7.9	.156-.312				
	4.0 5/32	4.1 #20	9.5 11.1 12.7 16.9	SFA54MG	1.2-6.4	.046-.250	7.90 .311	1.20 .047	116 255	170 375
				SFA55MG	3.2-7.9	.125-.312				
				SFA56MG	4.0-9.5	.156-.375				
				SFA58MG	6.4-12.7	.250-.500				
4.8 3/16	4.9 #11	10.3 15.1 16.9 24.8	SFA64MG	1.6-6.4	.062-.250	9.80 .386	1.45 .057	159 350	240 530	
			SFA66MG	4.8-11.1	.187-.437					
			SFA68MG	6.4-12.7	.250-.500					
			SFA612MG	12.7-19.8	.500-.781					
EXTRA LARGE	3.2 1/8	3.3 #30	8.0 11.1	SFB43MG	0.8-4.8	.031-.187	9.50 .374	1.20 .047	75 165	104 230
				SFB45MG	4.0-7.9	.156-.312				
	4.0 5/32	4.1 #20	12.7 16.9	SFB56MG	4.0-9.5	.156-.375	12.0 .472	1.50 .059	116 255	170 375
				SFB58MG	6.4-12.7	.250-.500				
	4.8 3/16	4.9 #11	10.3 16.9 24.8	SFB64MG	1.6-6.4	.062-.250	15.85 .624	1.75 .069	159 350	240 530
				SFB68MG	6.4-12.7	.250-.500				
120° CSK	3.2 1/8	3.3 #30	9.7 11.1 12.7	SFC44MG	2.4-6.4	.093-.250	5.35 .210	.850 .033	70 155	93 205
				SFC45MG	4.0-7.9	.156-.312				
				SFC46MG	4.0-9.5	.156-.375				
	4.0 5/32	4.1 #20	9.7 11.3 12.7	SFC54MG	1.2-6.4	.046-.250	6.30 .248	.900 .035	102 225	136 300
				SFC55MG	2.8-7.9	.109-.312				
				SFC56MG	4.3-9.5	.171-.375				
4.8 3/16	4.9 #11	12.1 16.9	SFC65MG	3.2-7.9	.125-.312	8.80 .347	1.35 .053	159 350	240 530	
			SFC68MG	6.4-12.7	.250-.500					

ALSO AVAILABLE ALUMINUM RIVET WITH ALUMINUM MANDREL

Product specification are in effect at the time of publishing

# MULTIPLE GRIP RIVETS

**General Drawing**

**RIVET MATERIAL : STEEL**                      **MANDREL MATERIAL : STEEL**

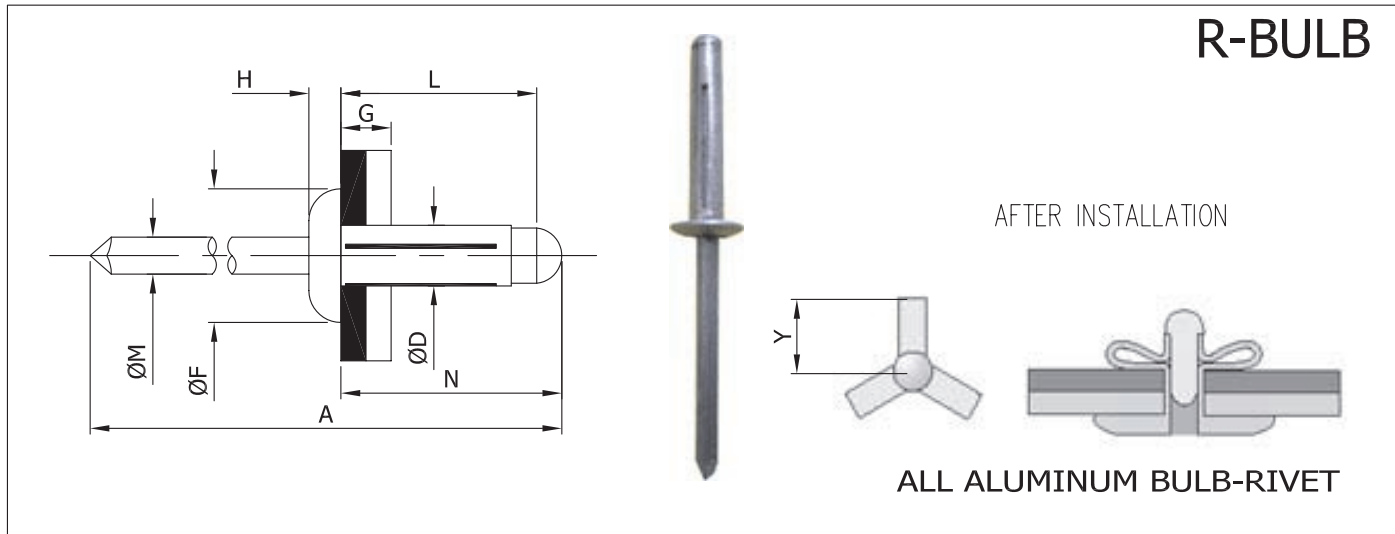
Head Type	D	DRILL (M)	L	PART #	GRIP RANGE	GRIP RANGE	F	H	SHEAR	TENSILE
	mm inch	mm inch	mm inch		mm	inch	mm inch	mm inch		
DOME	3.2	3.3	9.0	SSA43MG	1.1-4.0	.043-.157	7.20	0.85	160	175
	1/8	#30	11.1	SSA45MG	1.0-9.0	.039-.354	.283	.033	353	385
	4.0	4.1	11.0	SSA53MG	1.4-5.0	.055-.197	8.10	1.20	200	240
	5/32	#20	14.0	SSA55MG	2.0-9.0	.055-.315	.319	.047	440	530
	4.8	4.9	11.0	SSA64MG	1.0-6.0	.039-.236	9.80	1.45	450	390
			14.0	SSA66MG	1.0-9.0	.039-.354				
	3/16	#11	17.0	SSA68MG	3.0-12.0	.118-.472	.386	.057	992	860
EXTRA LARGE	4.8	4.9	11.0	SSB64MG	1.0-6.0	.039-.236	15.85	1.75	450	390
			14.0	SSB66MG	1.0-9.0	.039-.354				
	3/16	#11	17.0	SSB68MG	3.0-12.0	.118-.472	.624	.069	992	860

## STAINLESS STEEL MULTIPLE GRIP RIVETS

**RIVET MATERIAL : 300 SERIES ST. ST.**                      **MANDREL MATERIAL : 300 SERIES ST. ST.**

Head Type	D	DRILL (M)	L	PART #	GRIP RANGE	GRIP RANGE	F	H	SHEAR	TENSILE
	mm inch	mm inch	mm inch		mm	inch	mm inch	mm inch		
DOME	3.2 1/8	#30	9.3	SCCA43MG	0.5-4.8	.020-.189	6.35 .250	1.05 .041	420	470
			10.9	SCCA44MG	1.6-6.4	.063-.252				
			12.4	SCCA45MG	3.2-7.9	.126-.311				
			15.6	SCCA47MG	6.4-11.1	.252-.437				
	4.0 5/32	#20	11.4	SCCA54MG	1.2-6.4	.047-.252	7.95 .312	1.30 .051	650	810
			12.9	SCCA55MG	3.2-7.9	.126-.311				
			14.5	SCCA56MG	4.8-9.5	.189-.374				
			17.7	SCCA58MG	7.9-12.7	.311-.500				
	4.8 3/16	#11	11.9	SCCA64MG	1.2-6.4	.047-.252	9.50 .375	1.55 .061	950	1050
			15.0	SCCA66MG	3.2-9.5	.126-.374				
			18.2	SCCA68MG	6.4-12.7	.252-.500				
			21.4	SCCA610MG	9.5-15.9	.374-.626				
			24.6	SCCA612MG	12.7-19.1	.500-.752				


Product specification are in effect at the time of publishing



DOME FLANGE										
RIVET SIZE	PART #	RIVET LENGTH L mm	GRIP RANGE G mm	M mm	D mm	H mm	F mm	A mm	N mm	Y MAX mm
4.0 mm 5/32	SAA52RB	13.6	1.0-3.0	2.31	4.00	1.4	8.00	48	16.0	6.0
	SAA54RB	18.8	1.0-7.0	2.31	4.00	1.4	8.00	53	20.4	8.5
4.8 mm 3/16	SAA64RB	15.3	1.0-4.0	2.91	4.82	1.8	9.8	51	18.3	7.0
	SAA66RB	20.5	1.0-9.0	2.91	4.82	1.8	9.8	56	23.5	9.5
	SAA68RB	24.0	4.0-12.0	2.91	4.82	1.8	9.8	60	27.0	11.0
LARGE FLANGE										
4.8 mm 3/16	SAB63RB	15.3	1.0-4.0	2.91	4.82	2.0	14.0	51	18.3	7.0
	SAB64RB	17.5	1.0-6.3	2.91	4.82	2.0	14.0	53	20.5	8.0
	SAB66RB	20.5	1.0-9.0	2.91	4.82	2.0	14.0	56	23.5	9.5

RIVET SIZE	RECOMMENDED HOLE SIZE	TYPICAL SHEAR STRENGTH N/Kgf	TYPICAL TENSILE STRENGTH N/Kgf
4.0 mm	4.2-4.5	600/61	1000/102
4.8 mm	5.0-5.3	900/92	1200/122

Product specification are in effect at the time of publishing

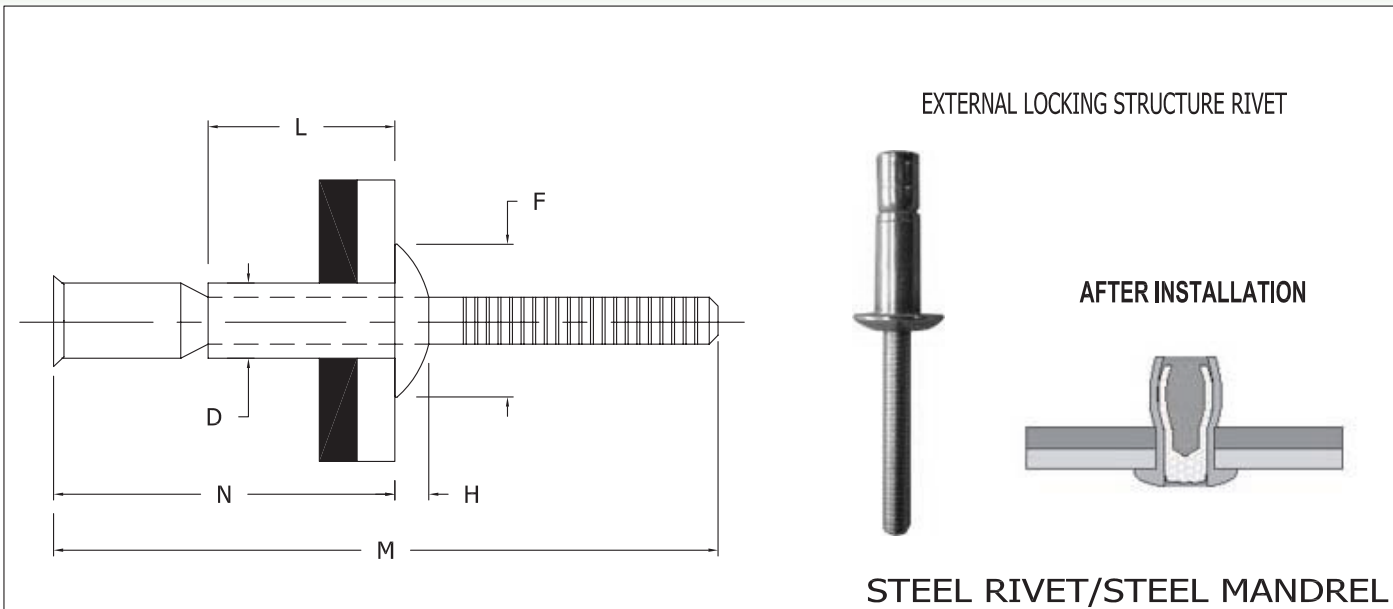


**RIVET MATERIAL : ALUMINIUM 5056**                      **MANDREL MATERIAL : STEEL**

Part Number	Hole Size mm	M mm	F mm	H mm	Rivet Length L mm	D mm	Grip Range G mm	Typical Strenight	
								Shear	Tensile
SFT 53	4.3	2.31	7.8	1.15	10.0	4.0	2.0-4.0	150 Kgf	185 Kgf
SFT 54					12.0		3.0-6.0		
SFT 55					14.0		4.0-8.0		
SFT 56					16.0		6.0-10.0		
SFT 61	5.2	2.61	9.3	1.30	10.0	4.8	0.1-2.0	200 Kgf	200 Kgf
SFT 63					12.0		2.0-5.0		
SFT 64					14.0		3.0-7.0		
SFT 65					16.0		5.0-9.0		
SFT 67					18.0		7.0-11.0		
SFT 68					20.0		9.0-13.0		
SFT 612					25.0		12.0-18.0		
SFT 616					30.0		16.0-23.0		
SFT 618					35.0		21.0-28.0		
SFT 620					40.0		26.0-33.0		

Product specification are in effect at the time of publishing

# R- BOLT



EXTERNAL LOCKING STRUCTURE RIVET

TYPE	Part #	LENGTH L	GRIP RANGE G	BODY Ø D	HEAD HEIGHT H	HEAD Ø F	STRENGTH (Kgf)		Blind Side Protrusion N
							Shear	Tensile	
4.8 mm	SSA64MB	10.5	1.6-6.9	4.8	2.2	9.2	625	535	19
	SSA67MB	14.5	1.6-11.0						19
6.5 mm	SSA86MB	14.2	2.0-9.5	6.5	2.8	13.0	1250	1000	25
	SSA810MBS	14.2	8.9-15.9						31
	SSA810MB	14.2	2.0-15.9						36

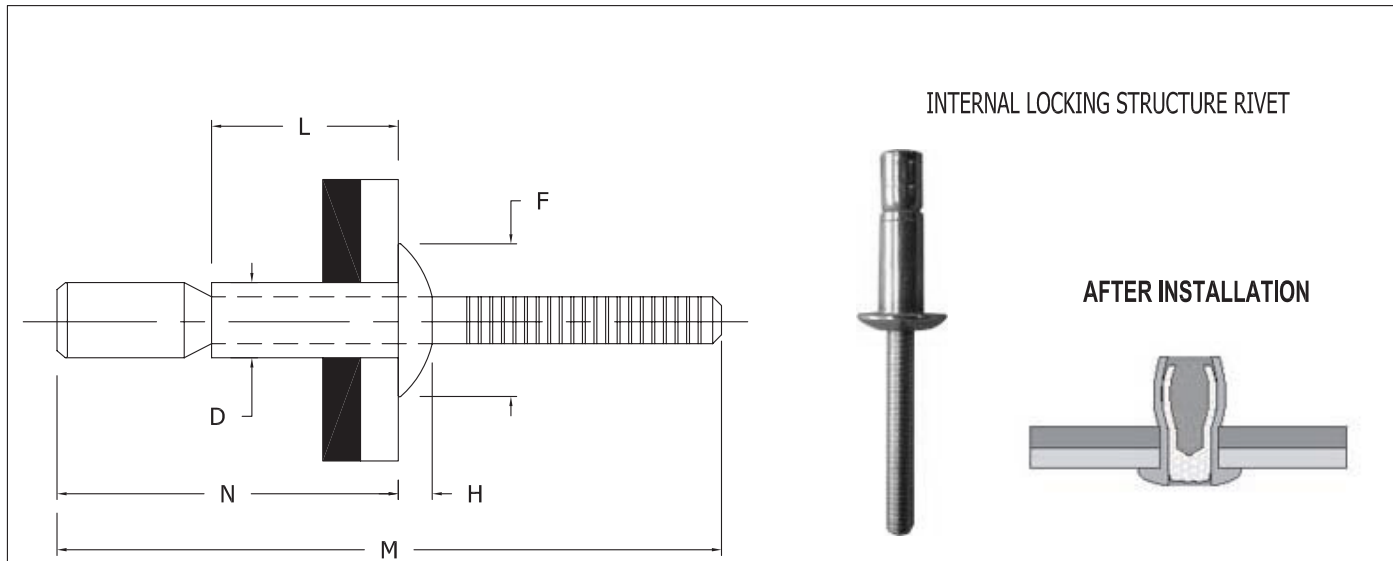
STEEL RIVET/STEEL MANDREL

TYPE	Part #	LENGTH L	GRIP RANGE G	BODY Ø D	HEAD HEIGHT E	HEAD Ø H	STRENGTH (Kgf)		Blind Side Protrusion N
							Shear	Tensile	
4.8 mm	SAA64MB	10.5	1.6-6.9	4.8	2.2	9.2	293	263	19
	SAA67MB	14.5	1.6-11.0						19
6.5 mm	SAA86MB	14.2	2.0-9.5	6.5	2.8	13.0	590	450	25
	SAA810MB	14.2	2.0-15.9						36

ALUMINIUM RIVET/ALUMINIUM MANDREL

TYPE	Part #	LENGTH L	GRIP RANGE G	BODY Ø D	HEAD HEIGHT E	HEAD Ø H	STRENGTH (Kgf)		Blind Side Protrusion N
							Shear	Tensile	
4.8 mm	SCCA64MB	10.5	1.6-6.9	4.8	2.2	9.2	625	500	19
	SCCA67MB	14.5	1.6-11.0						19
6.5 mm	SCCA86MB	14.2	2.0-9.5	6.5	2.8	13.0	1250	950	25
	SCCA810MB	14.2	2.0-15.9						36

Product specification are in effect at the time of publishing



STEEL RIVET/STEEL MANDREL

TYPE	Part #	LENGTH L	GRIP RANGE G	BODY Ø D	HEAD HEIGHT H	HEAD Ø F	STRENGTH (Kgf)		Blind Side Protrusion N
							Shear	Tensile	
4.8 mm	SSA64ML	10.5	1.6-6.9	4.8	2.2	9.2	625	535	19
	SSA67ML	14.5	1.6-11.0						19
6.5 mm	SSA86ML	14.2	2.0-9.5	6.5	2.8	13.0	1250	1000	25
	SSA810MLS	14.2	8.9-15.9						31
	SSA810ML	14.2	2.0-15.9						36

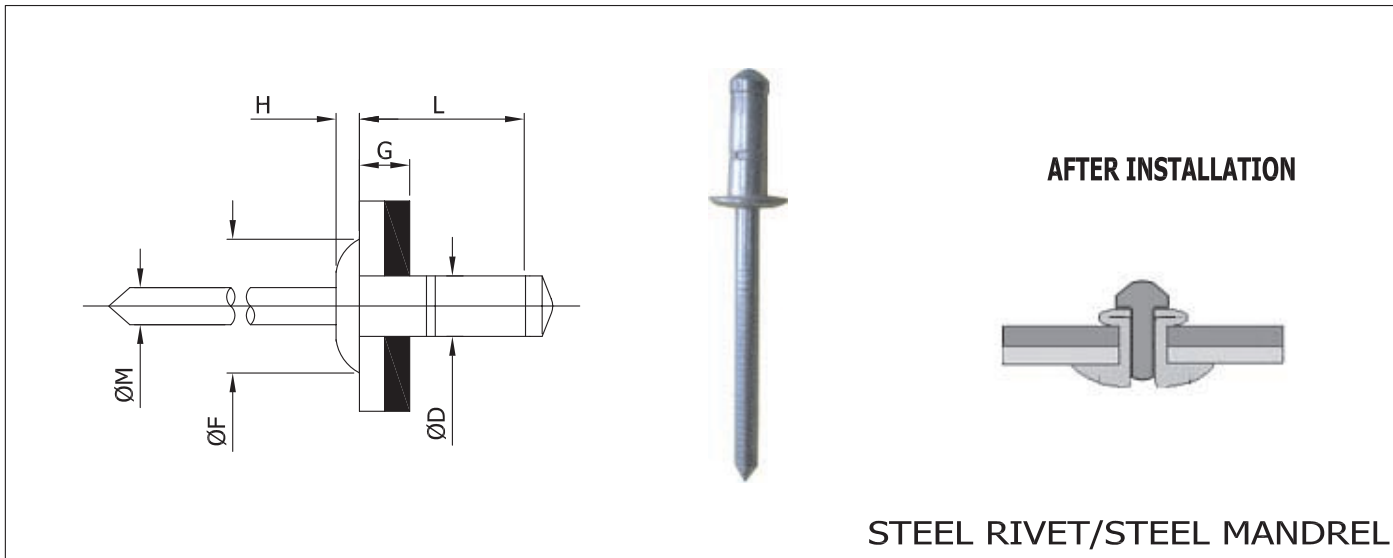
ALUMINIUM RIVET/ALUMINIUM MANDREL

TYPE	Part #	LENGTH L	GRIP RANGE G	BODY Ø D	HEAD HEIGHT E	HEAD Ø H	STRENGTH (Kgf)		Blind Side Protrusion N
							Shear	Tensile	
4.8 mm	SAA64ML	10.5	1.6-6.9	4.8	2.2	9.2	293	263	19
	SAA67ML	14.5	1.6-11.0						19
6.5 mm	SAA86ML	14.2	2.0-9.5	6.5	2.8	13.0	590	450	25
	SAA810ML	14.2	2.0-15.9						36

STAINLESS RIVET/STAINLESS MANDREL

TYPE	Part #	LENGTH L	GRIP RANGE G	BODY Ø D	HEAD HEIGHT E	HEAD Ø H	STRENGTH (Kgf)		Blind Side Protrusion N
							Shear	Tensile	
4.8 mm	SCCA64ML	10.5	1.6-6.9	4.8	2.2	9.2	625	500	19
	SCCA67ML	14.5	1.6-11.0						19
6.5 mm	SCCA86ML	14.2	2.0-9.5	6.5	2.8	13.0	1250	950	25
	SCCA810ML	14.2	2.0-15.9						36

Product specification are in effect at the time of publishing



STEEL RIVET/STEEL MANDREL

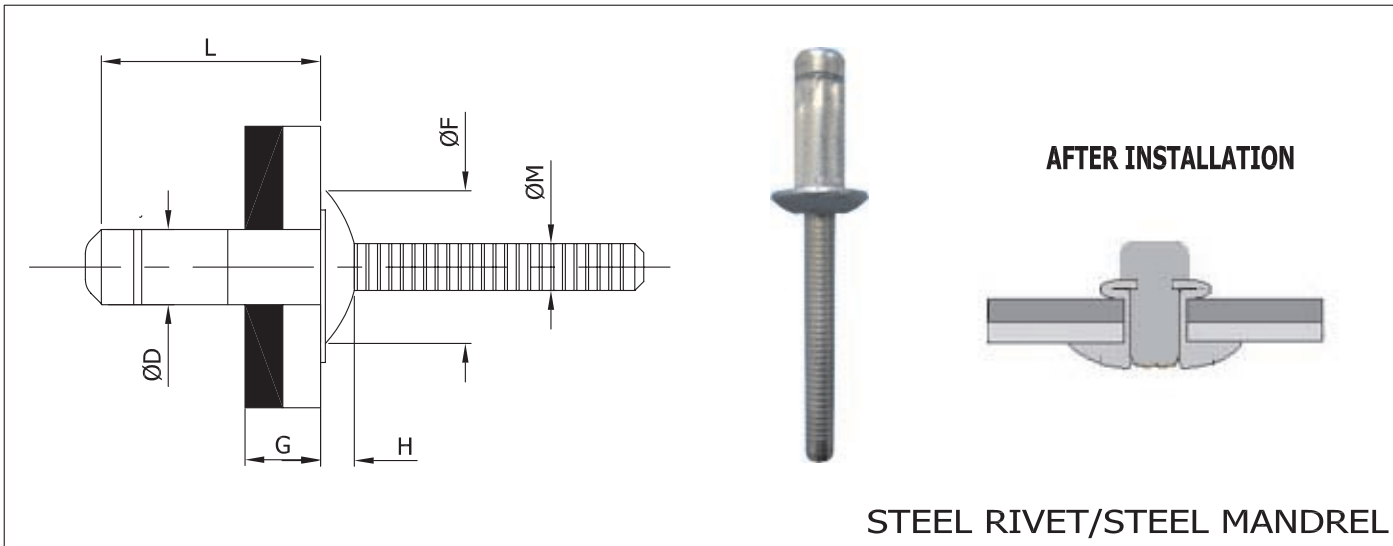
TYPE	Part Number	L mm	G mm	D mm	H mm	F mm	M mm	STRENGTH (Kgf)		Hole Size mm
								Shear	Tensile	
4.0 mm	SSA52AL	7.7	1.0-3.0	4.0	1.3	7.7	2.6	350	285	4.1
	SSA53AL	9.7	3.0-5.0							
	SSA54AL	12.7	5.0-7.0							
4.8 mm	SSA62AL	8.8	1.5-3.5	4.8	1.3	9.3	3.0	367 428 571	387	4.9
	SSA64AL	11.3	3.5-6.0							
	SSA66AL	14.3	6.0-8.5							
6.0 mm	SSA83AL	10.0	1.5-4.0	6.0	1.8	12	3.95	490	520	6.1-6.3
	SSA84AL	13.0	3.5-6.0							
	SSA86AL	16.0	6.0-9.0							
	SSA88AL	19.0	9.0-12.0							

**ALSO AVAILABLE STAINLESS STEEL RIVET WITH STAINLESS STEEL MANDREL.**

Product specification are in effect at the time of publishing

# DOME FLANGE

# R-LOCK STEEL



STEEL RIVET/STEEL MANDREL

TYPE	Part Number	L mm	G mm	D mm	H mm	F mm	M mm	STRENGTH (Kgf)		Hole Size mm
								Shear	Tensile	
4.8 mm	SSA62RL	9.0	1.5-3.5	4.8	2.2	9.8	3.02	460	360	5.0
	SSA64RL	11.5	3.5-6.0					610		
	SSA65RL	14.0	6.0-8.5					640		
	SSA67RL	16.5	8.5-11.0							
	SSA68RL	19.0	11.0-13.5							
6.4 mm	SSA82RL	9.0	1.5-3.5	6.4	3.0	13.0	4.17	700	660	6.6-6.8
	SSA83RL	10.5	2.8-4.8					940		
	SSA84RL	12.5	4.8-6.8					1040		
	SSA86RL	14.5	6.8-8.8							
	SSA87RL	16.5	8.8-10.8							
	SSA88RL	18.5	10.8-12.8							
	SSA810RL	20.5	12.8-14.8							
	SSA811RL	22.5	14.8-16.8					1140		
	SSA812RL	24.5	16.8-18.8							
	SSA813RL	26.5	18.8-20.8							
	SSA814RL	28.5	20.8-22.8							
7.8 mm	SSA94RL	13.5	4.0-7.0	7.8	3.70	16.0	5.12	1410	930	8.0-8.3
	SSA97RL	16.5	7.0-10.0					1600		
	SSA98RL	19.5	10.0-13.0							
	SSA910RL	22.5	13.0-16.0							
	SSA912RL	25.2	16.0-19.0							
	SSA914RL	28.5	19.0-22.0							
	SSA916RL	31.5	22.0-25.0							

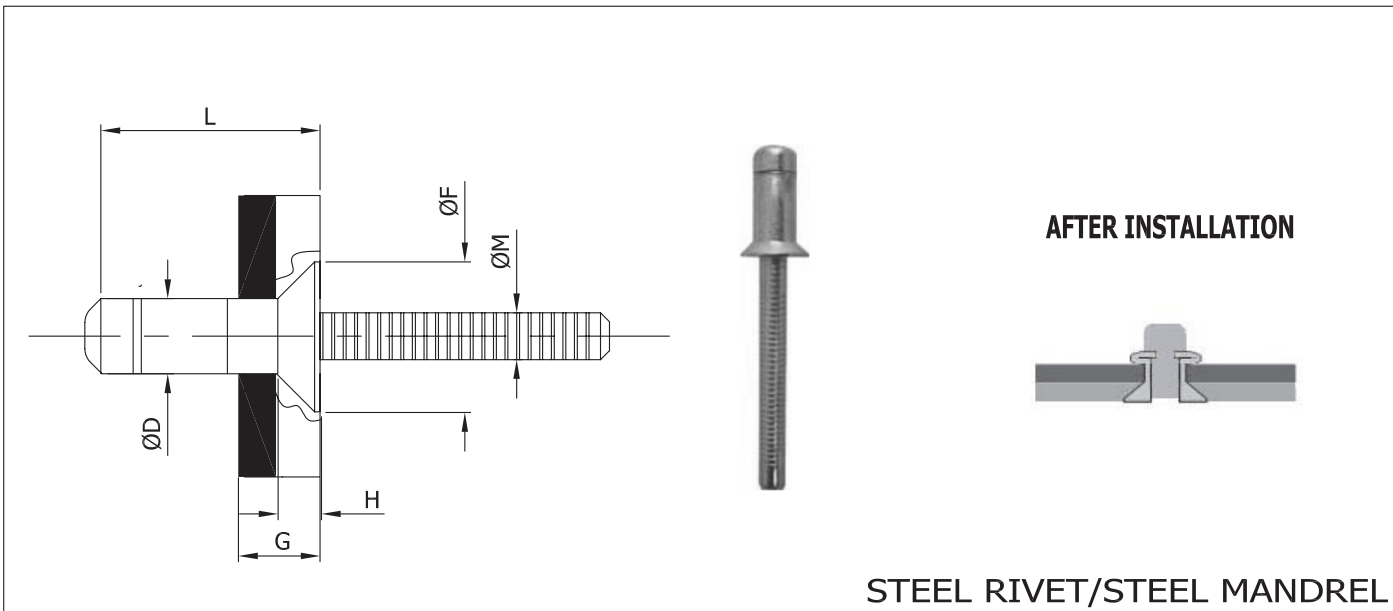
Product specification are in effect at the time of publishing

**CBRC 1.800.258.2579**



# COUNTERSUNK FLANGE

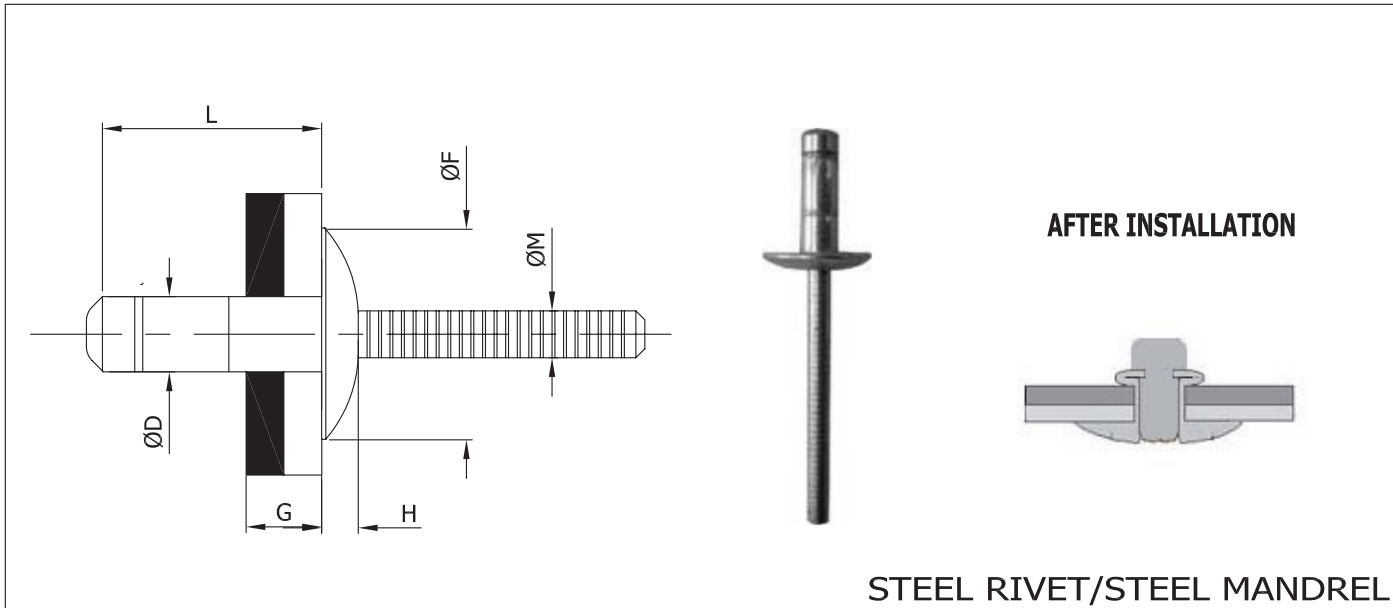
# R-LOCK STEEL



STEEL RIVET/STEEL MANDREL

TYPE	Part Number	L mm	G mm	D mm	H mm	F mm	M mm	STRENGTH (Kgf)		Hole Size mm
								Shear	Tensile	
4.8 mm	SSC64RL	11.5	3.5-6.0	4.8	1.8	8.5	3.02	310		4.9-5.1
	SSC65RL	14.0	6.0-8.5							
	SSC67RL	16.5	8.5-11.0					400	300	
	SSC68RL	19.0	11.0-13.5							
6.4 mm	SSC83RL	11.5	3.8-5.8	6.4	2.0	10.0	4.17	550	580	6.6-6.8
	SSC84RL	12.5	4.8-6.8					650		
	SSC85RL	13.5	5.8-7.8					750		
	SSC86RL	15.5	7.8-9.8					950		
	SSC87RL	17.5	9.8-11.8							
	SSC89RL	19.5	11.8-13.8							
	SSC810RL	21.5	13.8-15.8					1050		
	SSC811RL	23.5	15.8-17.8							

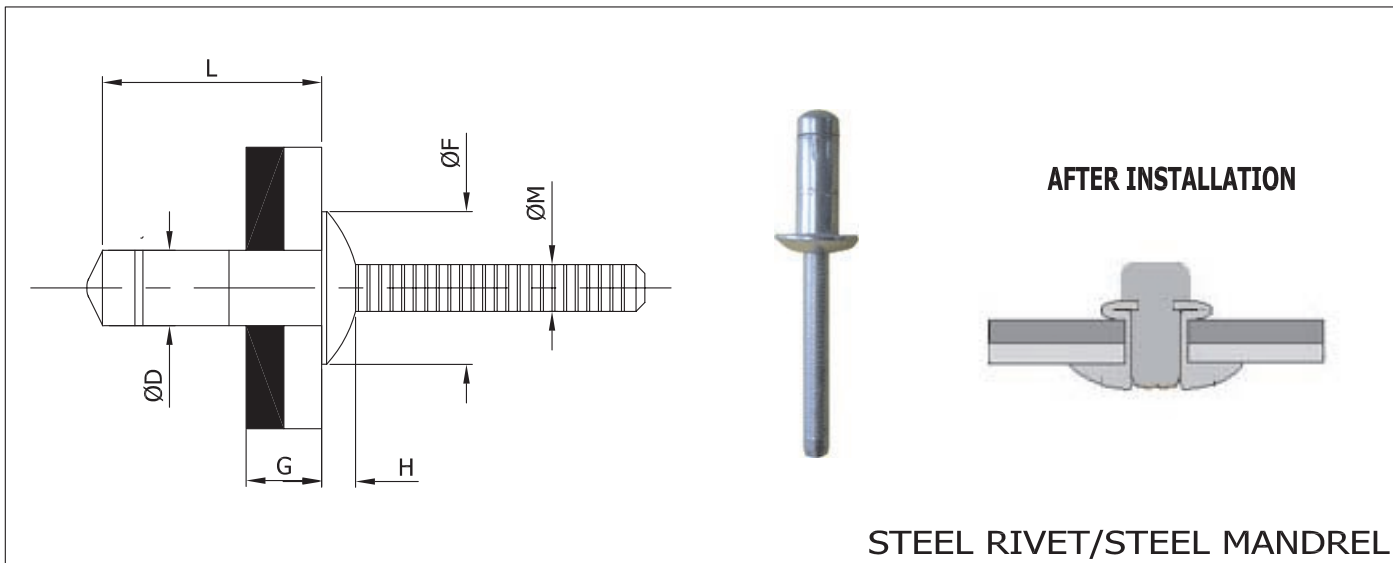
Product specification are in effect at the time of publishing



STEEL RIVET/STEEL MANDREL

TYPE	Part Number	L mm	G mm	D mm	H mm	F mm	M mm	STRENGTH (Kgf)		Hole Size mm
								Shear	Tensile	
4.8 mm	SSB62RL	9.0	1.5-3.5	4.8	2.0	14.0	3.02	460	360	4.9-5.1
	SSB64RL	11.5	3.5-6.0					610		
	SSB65RL	14.0	6.0-8.5					640		
	SSB67RL	16.5	8.5-11.0							
	SSB68RL	19.0	11.0-13.5							
6.4 mm	SSB84RL	12.5	4.8-6.8	6.4	3.0	19.0	4.27	1040	660	6.6-6.8
	SSB86RL	14.5	6.8-8.8							
	SSB87RL	16.5	8.8-10.8							
	SSB88RL	18.5	10.8-12.8							
	SSB810RL	20.5	12.8-14.8							
	SSB811RL	22.5	14.8-18.8							
	SSB812RL	24.5	16.8-18.8							
	SSB813RL	26.5	18.8-20.8					1140		
	SSB814RL	28.5	20.8-22.8							
	SSB816RL	30.5	22.8-24.8							

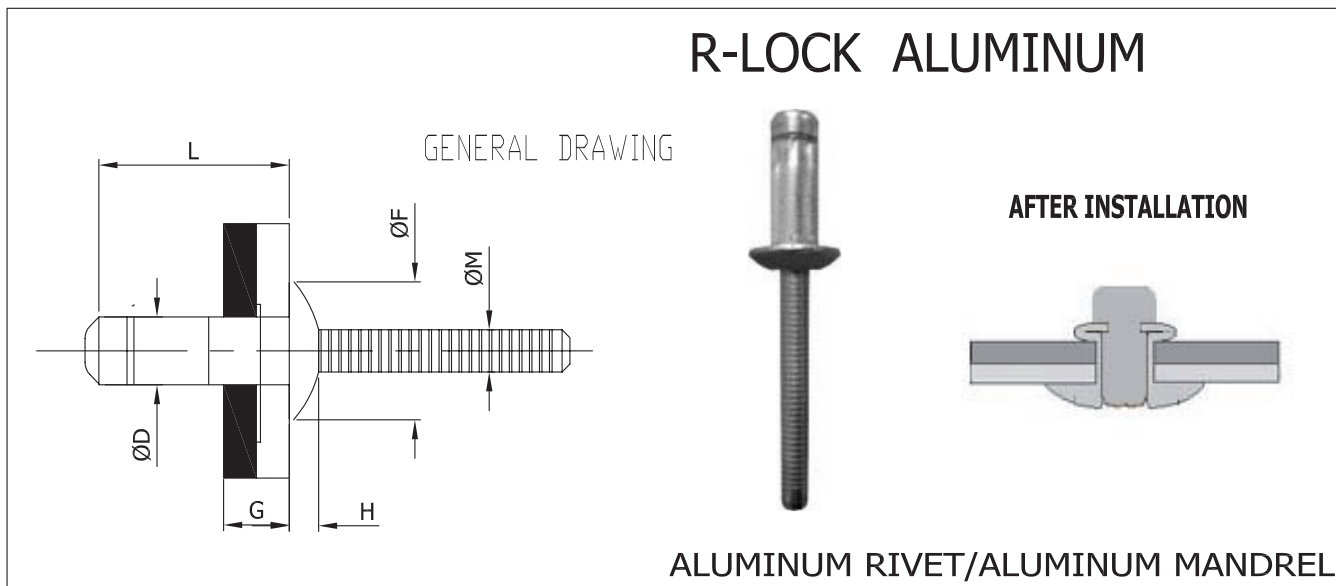
Product specification are in effect at the time of publishing



STEEL RIVET/STEEL MANDREL

TYPE	Part Number	L mm	G mm	D mm	H mm	F mm	M mm	STRENGTH (Kgf)		Hole Size mm
								Shear	Tensile	
၆၆၆	SSA83SRL	10.5	2.0-4.5	6.5	3.0	13.0	4.17	1100	810	6.7-6.9
	SSA84SRL	12.5	3.0-6.5					1250		
	SSA85SRL	14.5	5.0-8.5					1400		
	SSA87SRL	16.5	7.0-10.5					1450		
	SSA88SRL	18.5	9.0-12.5							
	SSA89SRL	20.5	11.0-14.5					1570		
	SSA810SRL	22.5	13.0-16.5							

Product specification are in effect at the time of publishing



DOME FLANGE

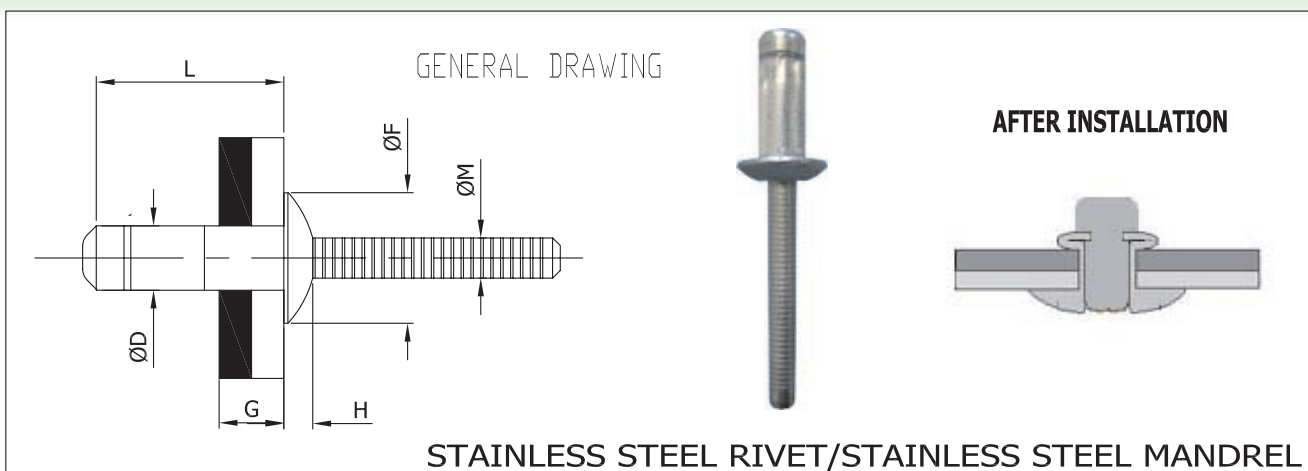
TYPE	Part Number	L mm	G mm	D mm	H mm	F mm	M mm	STRENGTH (Kgf)		Hole Size mm
								Shear	Tensile	
6.4 mm	SAA83RL	10.5	2.8-4.8	6.4	3.0	13.0	4.17	500	350	6.6-6.8
	SAA84RL	12.5	4.8-6.8							
	SAA86RL	14.5	6.8-8.8							
	SAA87RL	16.5	8.8-10.8							
	SAA88RL	18.5	10.8-12.8							
SAA810RL	20.5	12.8-14.8								

COUNTERSANK FLANGE

TYPE	Part Number	L mm	G mm	D mm	H mm	F mm	M mm	STRENGTH (Kgf)		Hole Size mm
								Shear	Tensile	
6.4 mm	SAC83RL	11.5	3.8-5.8	6.4	2.0	10.0	4.17	400	300	6.6-6.8
	SAC85RL	13.5	5.8-7.8							
	SAC86RL	15.5	7.8-9.8							
	SAC87RL	17.5	9.8-11.8							
	SAC89RL	18.5	11.8-13.8							
	SAC810RL	21.5	13.8-15.8							

Product specification are in effect at the time of publishing

# R-LOCK STAINLESS STEEL



## DOME FLANGE

TYPE	Part Number	L mm	G mm	D mm	H mm	F mm	M mm	STRENGTH (Kgf)		Hole Size mm
								Shear	Tensile	
4.8 mm	SCCA62RL	9.0	1.5-3.5	4.8	2.2	9.8	3.02	600	440	5.0
	SCCA64RL	11.5	3.5-6.0							
	SCCA65RL	14.0	6.0-8.5							
6.5 mm	SCCA83RL	10.5	1.8-4.8	6.5	3.0	13.0	4.17	1480	850	6.6-6.8
	SCCA84RL	12.5	3.8-6.8							
	SCCA86RL	14.5	4.8-8.8							
	SCCA87RL	16.5	6.8-10.8							
	SCCA88RL	18.5	8.8-12.8							
	SCCA810RL	20.5	10.8-14.8							

## COUNTERSANK FLANGE

TYPE	Part Number	L mm	G mm	D mm	H mm	F mm	M mm	STRENGTH (Kgf)		Hole Size mm
								Shear	Tensile	
6.4 mm	SCCC85RL	13.5	4.8-7.8	6.4	2.0	10.0	4.17	1100 1300 1400	850	6.6-6.8
	SCCC86RL	15.5	6.8-9.8							6.6-6.7
	SCCC87RL	17.5	8.8-11.8							

## LARGE FLANGE

TYPE	Part Number	L mm	G mm	D mm	H mm	F mm	M mm	STRENGTH (Kgf)		Hole Size mm
								Shear	Tensile	
6.4 mm	SCCB83RL	10.5	1.8-4.8	6.4	3.1	16.3	4.17	1440	850	6.6-6.8
	SCCB84RL	12.5	3.8-6.8							
	SCCB86RL	14.5	4.8-8.8							
	SCCB87RL	16.5	6.8-10.8							
	SCCB88RL	18.5	8.8-12.8							6.5-6.7

Product specification are in effect at the time of publishing