



SECTION 3: THREADED INSERTS

1.800.258.2579



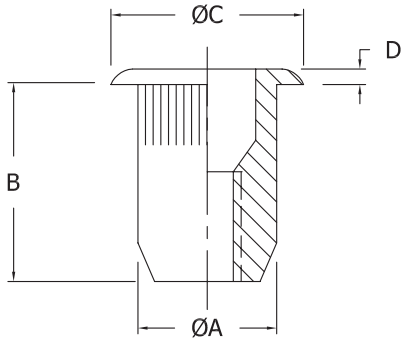
SECTION 3: THREADED INSERTS

1. THIN SHEET NUT-INSERT KNURLED SERIES- SMALL FLANGE	3-1
2. THIN SHEET NUT-INSERT KNURLED SERIES-LARGE FLANGE	3-2
3. THIN SHEET NUT-INSERT	3-3
4. THIN SHEET NUT-INSERT HEX SERIES - LARGE FLANGE	3-4,3-5
5. PRE-BULBED INSERT	3-6
6. THIN SHEET NUT INSERT HALF- HEX SERIES- SMALL FLANGE	3-7
7. NUT-INSERT	3-8
8. RUBBER NUT-INSERT	3-9

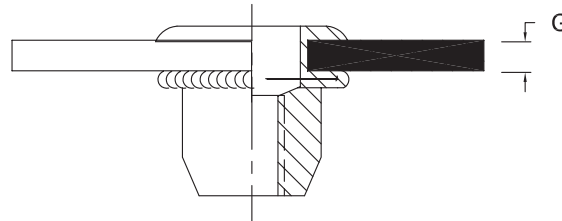
THIN SHEET NUT-INSERT KNURLED SERIES

MATERIAL :Low Carbon Steel
FINISH : Zinc Yellow / Clear Zinc

BEFORE INSTALLATION



AFTER INSTALLATION



SMALL FLANGE

Thread Size	Part #	A Max.	B ±0.015	C ±0.010	D±0.010	GRIP RANGE G	HOLE ±0.006
6-32	RRKS-632-80	0.265	0.420	0.310	0.019	0.020-0.080	17/64
6-32	RRKS-632-130	0.265	0.470	0.310	0.019	0.080-0.130	17/64
8-32	RRKS-832-80	0.265	0.420	0.310	0.019	0.020-0.080	17/64
8-32	RRKS-832-130	0.265	0.470	0.310	0.019	0.080-0.130	17/64
10-24	RRKS-1024-130	0.296	0.475	0.340	0.019	0.020-0.080	19/64
10-24	RRKS-1024-225	0.296	0.585	0.340	0.019	0.130-0.225	19/64
10-32	RRKS-1032-130	0.296	0.475	0.340	0.019	0.020-0.080	19/64
10-32	RRKS-1032-225	0.296	0.585	0.340	0.019	0.130-0.225	19/64
1/4-20	RRKS-420-165	0.390	0.580	0.455	0.022	0.027-0.165	25/64
1/4-20	RRKS-420-260	0.390	0.680	0.455	0.022	0.165-0.260	25/64
5/16-18	RRKS-518-150	0.530	0.690	0.595	0.022	0.027-0.150	17/32
5/16-18	RRKS-518-312	0.530	0.805	0.595	0.022	0.150-0.312	17/32
3/8-16	RRKS-616-150	0.530	0.690	0.595	0.022	0.027-0.150	17/32
3/8-16	RRKS-616-312	0.530	0.805	0.595	0.022	0.150-0.312	17/32

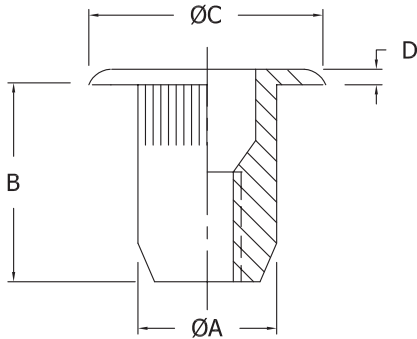
AVAILABLE IN ALL METRIC SIZES

Product specification are in effect at the time of publishing

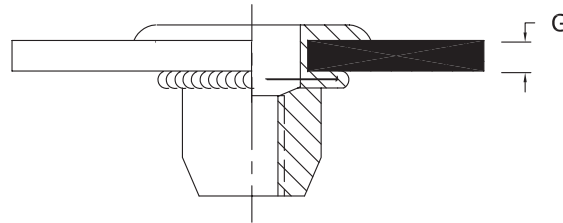
THIN SHEET NUT-INSERT KNURLED SERIES

MATERIAL :Low Carbon Steel
FINISH : Zinc Yellow / Clear Zinc

BEFORE INSTALLATION



AFTER INSTALLATION



LARGE FLANGE

Thread Size	Part #	A Max.	B ±0.015	C ±0.010	D±0.010	GRIP RANGE G	HOLE ±0.006
6-32	RRLS-632-80	0.265	0.420	0.390	0.030	0.020-0.080	17/64
6-32	RRLS-632-130	0.265	0.470	0.390	0.030	0.080-0.130	17/64
8-32	RRLS-832-80	0.265	0.420	0.390	0.030	0.020-0.080	17/64
8-32	RRLS-832-130	0.265	0.470	0.390	0.030	0.080-0.130	17/64
10-24	RRLS-1024-130	0.296	0.475	0.415	0.030	0.020-0.080	19/64
10-24	RRLS-1024-225	0.296	0.585	0.415	0.030	0.130-0.225	19/64
10-32	RRLS-1032-130	0.296	0.475	0.415	0.030	0.020-0.080	19/64
10-32	RRLS-1032-225	0.296	0.585	0.415	0.030	0.130-0.225	19/64
1/4-20	RRLS-420-165	0.390	0.580	0.500	0.030	0.027-0.165	25/64
1/4-20	RRLS-420-260	0.390	0.680	0.500	0.030	0.165-0.260	25/64
5/16-18	RRLS-518-150	0.530	0.690	0.685	0.035	0.027-0.150	17/32
5/16-18	RRLS-518-312	0.530	0.805	0.685	0.035	0.150-0.312	17/32
3/8-16	RRLS-616-150	0.530	0.690	0.685	0.035	0.027-0.150	17/32
3/8-16	RRLS-616-312	0.530	0.805	0.685	0.035	0.150-0.312	17/32

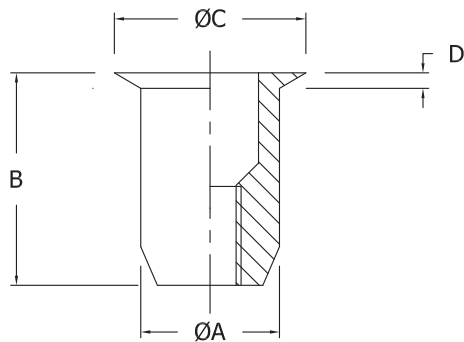
AVAILABLE IN ALL METRIC SIZES

Product specification are in effect at the time of publishing

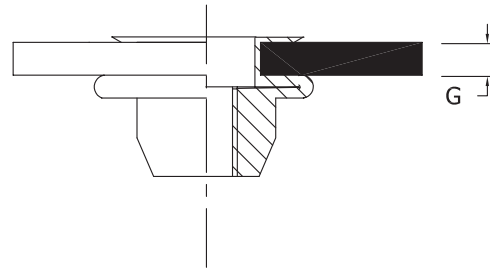
MATERIAL :Low Carbon Steel

FINISH : Zinc Yellow / Clear ZnC

BEFORE INSTALLATION



AFTER INSTALLATION



UNIFIED THREAD

Thread Size	Part #	A Max.	B ±0.015	C ±0.025	D±0.010	GRIP RANGE G	HOLE ±0.006
6-32	RR0S-632-80	0.249	0.385	0.295	0.180	0.020-0.080	0.250
8-32	RR0S-832-80	0.249	0.385	0.295	0.180	0.020-0.080	0.250
10-24	RR0S-1024-130	0.280	0.440	0.320	0.200	0.020-0.130	0.282
10-32	RR0S-1032-130	0.280	0.440	0.320	0.200	0.020-0.130	0.282
1/4-20	RR0S-420-165	0.374	0.580	0.425	0.220	0.030-0.165	0.375
5/16-18	RR0S-518-200	0.499	0.690	0.560	0.220	0.040-0.200	0.500
3/8-16	RR0S-616-200	0.499	0.690	0.560	0.220	0.040-0.200	0.500

METRIC THREAD

Thread Size	Part #	A Max.	B ±0.38	C ±0.25	D±0.08	GRIP RANGE G	HOLE ±0.015
M4x0.7	RR0S-470-2.0	6.320	10.400	7.000	0.460	0.500-2.000	6.400
M5x0.8	RR0S-580-3.3	7.110	12.000	8.100	0.510	0.500-3.300	7.200
M6x1.0	RR0S-610-4.2	9.500	15.000	10.200	0.560	0.760-4.200	9.600
M8x1.25	RR0S-8125-5.1	12.700	18.000	13.900	0.560	1.000-5.100	12.700
M10x1.5	RR0S-1015-5.1	12.700	18.000	13.900	0.600	1.000-5.000	12.700

Product specification are in effect at the time of publishing

THIN SHEET NUT-INSERT HEX SERIES

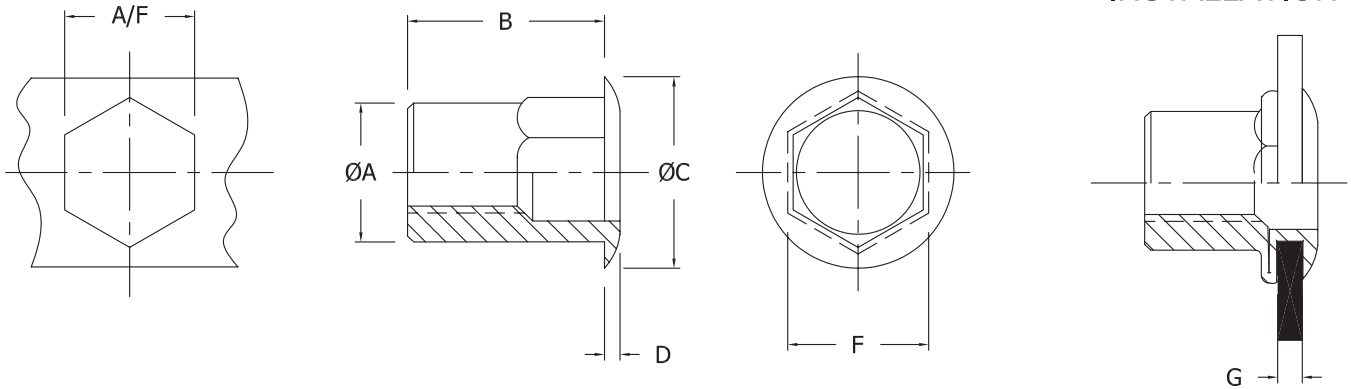
UNIFIED THREAD

MATERIAL :Low Carbon Steel

FINISH : Zinc Yellow/ Clear Zinc

BEFORE INSTALLATION

AFTER INSTALLATION



LARGE FLANGE

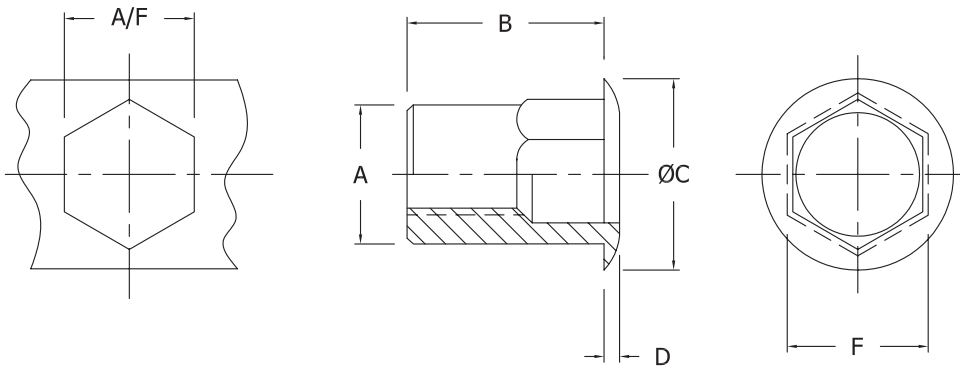
Thread Size	Part #	A Max.	B ±0.015	C ±0.025	D ±0.010	GRIP RANGE G	HEX HOLE A/F +0.004
6-32	RRHS-632-80	0.249	0.385	0.375	0.027	0.020-0.080	0.250
6-32	RRHS-632-130	0.249	0.435	0.375	0.027	0.080-0.130	0.250
8-32	RRHS-832-80	0.249	0.385	0.375	0.027	0.020-0.080	0.250
8-32	RRHS-832-130	0.249	0.435	0.375	0.027	0.080-0.130	0.250
10-24	RRHS-1024-130	0.280	0.435	0.390	0.027	0.020-0.130	0.281
10-24	RRHS-1024-225	0.280	0.535	0.390	0.027	0.130-0.225	0.281
10-32	RRHS-1032-130	0.280	0.435	0.390	0.027	0.020-0.130	0.281
10-32	RRHS-1032-225	0.280	0.535	0.390	0.027	0.130-0.225	0.281
1/4-20	RRHS-420-165	0.374	0.585	0.510	0.030	0.027-0.165	0.375
1/4-20	RRHS-420-260	0.374	0.685	0.510	0.030	0.165-0.260	0.375
5/16-18	RRHS-518-150	0.499	0.685	0.655	0.035	0.027-0.150	0.500
5/16-18	RRHS-518-312	0.499	0.845	0.655	0.035	0.150-0.312	0.500
3/8-16	RRHS-616-150	0.499	0.685	0.655	0.035	0.027-0.150	0.500
3/8-16	RRHS-616-312	0.499	0.845	0.655	0.035	0.150-0.312	0.500

Product specification are in effect at the time of publishing

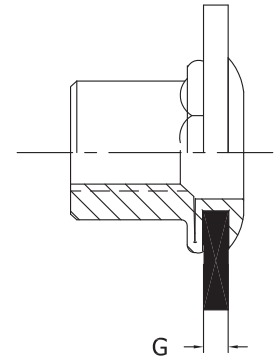
METRIC THREAD

MATERIAL :Low Carbon Steel
FINISH : Zinc Yellow/ Clear Zinc

BEFORE INSTALLATION



AFTER INSTALLATION



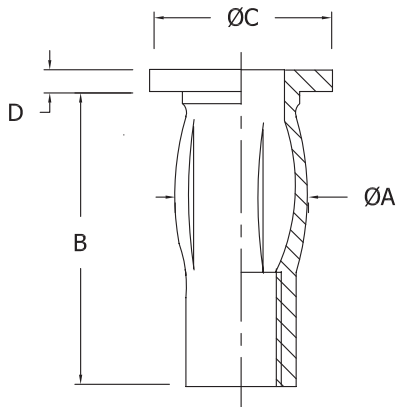
LARGE FLANGE

Thread Size	Part #	A Max.	B ±0.038	C ±0.50	D±0.20	GRIP RANGE G	HEX HOLE A/F +0.2
M4x0.7	RRHS-470-2.0	6.350	9.780	9.300	0.680	0.500-2.000	6.350
M4x0.7	RRHS-470-3.3	6.350	11.050	9.300	0.680	2.000-3.300	6.350
M5x0.8	RRHS-580-3.3	7.100	11.050	9.900	0.680	0.500-3.300	7.150
M5x0.8	RRHS-580-5.7	7.100	13.590	9.900	0.680	3.300-5.700	7.150
M6x1.0	RRHS-610-4.2	9.500	14.860	13.000	0.900	0.700-4.200	9.550
M6x1.0	RRHS-610-6.6	9.500	17.400	13.000	0.900	4.200-6.600	9.550
M8x1.25	RRHS-8125-3.8	12.700	17.400	17.000	1.000	0.700-3.800	12.700
M8x1.25	RRHS-8125-7.9	12.700	21.460	17.000	1.000	3.800-7.900	12.700
M10x1.5	RRHS-1015-3.8	12.700	17.400	17.000	1.000	0.700-3.800	12.700
M10x1.5	RRHS-1015-7.9	12.700	21.460	17.000	1.000	3.800-7.900	12.700

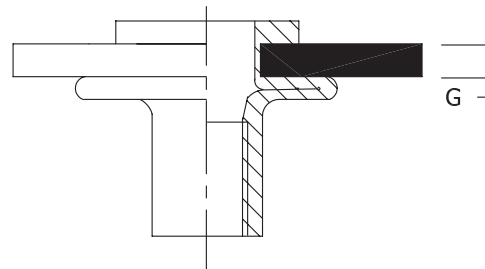
Product specification are in effect at the time of publishing

MATERIAL :Low Carbon Steel
FINISH : Zinc Yellow / Clear ZnC

BEFORE INSTALLATION



AFTER INSTALLATION



UNIFIED THREAD

Thread Size	Part #	A Max.	B ±0.015	C ±0.025	D±0.010	GRIP RANGE G	HOLE +0.006
1/4-20	420280	0.384	1.000	0.625	0.057	0.020-0.280	0.390
1/4-20	420500	0.384	1.235	0.625	0.057	0.280-0.500	0.390
5/16-18	518280	0.495	1.118	0.750	0.062	0.020-0.280	0.500
5/16-18	518500	0.495	1.348	0.750	0.062	0.280-0.500	0.500

METRIC THREAD

Thread Size	Part #	A Max.	B ±0.38	C ±0.25	D±0.08	GRIP RANGE G	HOLE ±0.015
M6x0.1	M67.1	9.75	25.4	15.88	1.45	0.50-7.1	9.91
M6x0.1	M612.7	9.75	31.34	15.88	1.45	7.1-12.7	9.91
M8x1.25	M87.1	12.57	28.4	19.05	1.57	0.50-7.1	12.7
M8x1.25	M812.7	12.57	34.24	19.05	1.57	7.1-12.7	12.7

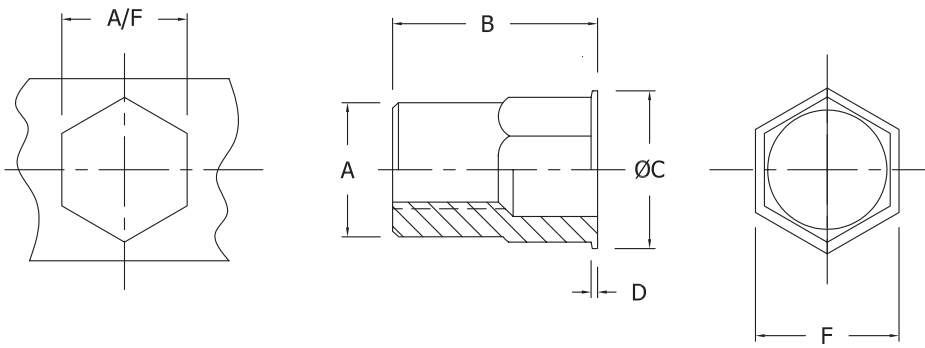
Product specification are in effect at the time of publishing

THIN SHEET NUT-INSERT HALF-HEX SERIES

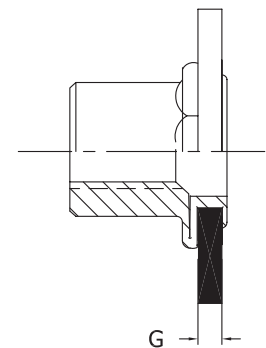
SMALL FLANGE

MATERIAL : Low Carbon Steel
FINISH : Zinc Yellow/ Clear Zinc

BEFORE INSTALLATION



AFTER INSTALLATION



UNIFIED THREAD

Thread Size	Part #	A Max.	B ± 0.010	C ± 0.015	D ± 0.010	GRIP RANGE G	HEX HOLE A/F +0.004
8-32	RRHAS-832	0.250	0.409	0.275	0.016	0.020-0.065	0.251
10-32	RRHAS-1032	0.280	0.472	0.319	0.020	0.020-0.083	0.281
1/4-20	RRHAS-420	0.374	0.570	0.413	0.020	0.030-0.116	0.375
5/16-18	RRHAS-518	0.413	0.630	0.453	0.020	0.035-0.130	0.414
3/8-16	RRHAS-616	0.500	0.740	0.551	0.020	0.039-0.138	0.501

METRIC THREAD

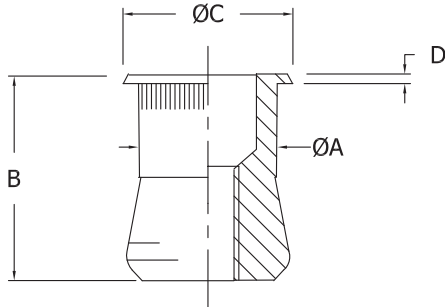
Thread Size	Part #	A Max.	B ± 0.25	C ± 0.3	D ± 0.1	GRIP RANGE G	HEX HOLE A/F +0.1
M4X0.7	RRHAS-470	6.35	10.40	7.00	0.40	0.50-1.65	6.40
M5X0.8	RRHAS-580	7.10	12.00	8.10	0.50	0.50-2.10	7.15
M6X1.0	RRHAS-610	9.50	14.50	10.50	0.50	0.75-2.95	9.55
M8X1.25	RRHAS-8125	10.50	16.00	11.50	0.50	0.90-3.30	10.55

Product specification are in effect at the time of publishing

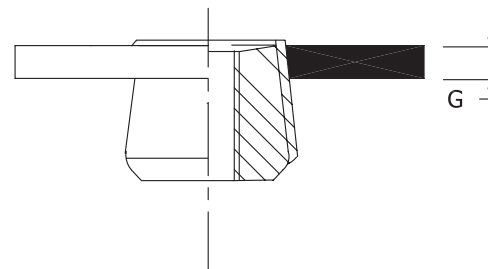
MATERIAL: Stainless Steel
Steel
Aluminum
Brass

FINISH : Cadmium (for Steel)

BEFORE INSTALLATION



AFTER INSTALLATION



UNIFIED THREAD

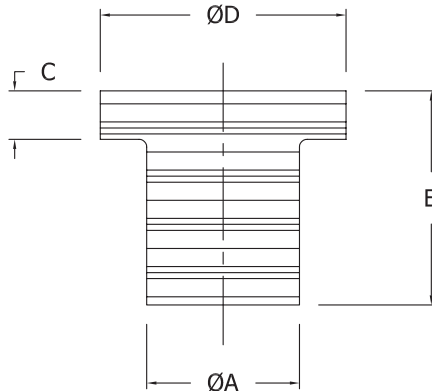
Thread Size	Part #	A Max.	B ± 0.015	C ± 0.025	Recommended Hole Size			
					G 0.030-0.090	G 0.091-0.124	G 0.125-0.186	G 0.187-Over
4-40	RRTS-440	0.187	0.370	0.211	0.188	0.194	0.193	0.196
6-32	RRTS-632	0.218	0.370	0.240	0.219	0.221	0.228	0.228
8-32	RRTS-832	0.249	0.370	0.269	0.250	0.257	0.266	0.266
10-24	RRTS-1024	0.280	0.370	0.306	0.281	0.290	0.290	0.297
10-32	RRTS-1032	0.280	0.370	0.306	0.281	0.290	0.290	0.297
1/4-20	RRTS-420	0.374	0.515	0.400	0.375	0.375	0.386	0.391
5/16-18	RRTS-518	0.499	0.615	0.528	0.500	0.500	0.516	0.516
3/8-16	RRTS-616	0.562	0.745	0.588	0.563	0.563	0.578	0.578

METRIC THREAD

Thread Size	Part #	A Max.	B ± 0.38	C ± 0.13	Recommended Hole Size			
					G 0.76-2.29	G 2.31-3.15	G 3.17-4.72	G 4.72-Over
M3x0.5	RRTS-M3	4.76	9.40	5.36	4.75	4.90	4.90	4.97
M4x0.7	RRTS-M4	6.34	9.40	6.83	6.35	6.52	6.74	6.74
M5x0.8	RRTS-M5	7.12	9.40	7.77	7.14	7.36	7.36	7.54
M6x1.0	RRTS-M6	9.51	13.08	10.16	9.52	9.52	9.80	9.92
M8x1.25	RRTS-M8	12.69	15.62	13.41	12.70	12.70	13.09	13.09

Product specification are in effect at the time of publishing

MATERIAL :Neoprene, E.P.D.M



Item #	Thread Size		A	Hole Size	Grip Range	B	C	D	Tightennng Torque (KGf/CM)	Hardness (+/-5)
	Standard	Metric								
RRUB-632	6-32	M3x0.5	7.9	7.9-8.2	0.4-4.0	12.60	1.40	11.0	2.5-5.0	60
RRUB-832	8-32	M4x0.7	7.9	7.9-8.2	0.4-4.0	12.60	1.40	11.0	2.5-4.0	70
RRUB-1032-1	10-32	M5x0.8	9.6	9.6-9.8	0.5-1.5	11.00	1.50	12.7	3.5-5.0	65
RRUB-1032-2	10-32	M5x0.8	9.6	9.6-9.8	0.4-4.9	14.10	0.90	12.7	3.5-5.0	60
RRUB-1032-3	10-32	M5x0.8	9.6	9.6-9.8	0.85-5.9	17.00	1.00	14.0	3.0-7.0	60
RRUB-1032-4	10-32	M5x0.8	9.6	9.6-9.8	0.8-5.8	20.95	4.70	18.95	4.0-7.0	60
RRUB-1032-5	10-32	M5x0.8	9.6	9.6-9.8	0.8-5.8	18.00	2.00	19.0	3.0-7.0	60
RRUB-1032-6	10-32	M5x0.8	9.6	9.6-9.8	7.9-11.4	21.50	0.90	14.0	3.0-9.0	60
RRUB-1032-7	10-32	M5x0.8	9.6	9.6-9.8	7.9-16.0	26.10	1.30	14.0	3.0-7.0	60
RRUB-1032-8	10-32	M5x0.8	9.6	9.6-9.8	20.5-30.0	39.80	1.30	14.0	3.5-5.0	60
RRUB-420-1	1/4"-20	M6x1.0	12.7	12.7-12.9	0.4-2.8	16.00	1.30	16.0	6.0-10.0	60
RRUB-420-2	1/4"-20	M6x1.0	12.7	12.7-12.9	0.8-4.7	21.10	4.75	19.05	8.0-10.0	70
RRUB-420-3	1/4"-20	M6x1.0	12.7	12.7-12.9	6.4-11.5	26.70	2.00	16.3	8.0-10.0	70
RRUB-518-1	5/16"-18	M8x1.25	15.9	15.9-16.1	0.4-4.0	18.30	3.20	21.5	10.0-15.0	60
RRUB-518-2	5/16"-18	M8x1.25	15.9	15.9-16.1	3.95-16.1	27.93	5.72	21.5	10.0-16.0	60

NOTICE:

1. The "Rubber Nut" must be kept away from oil and solvent.
2. The adjustable screw drive with specified setting torque should be used in operation.
3. Range of temperature applied -30°C to 80°C.

Product specification are in effect at the time of publishing